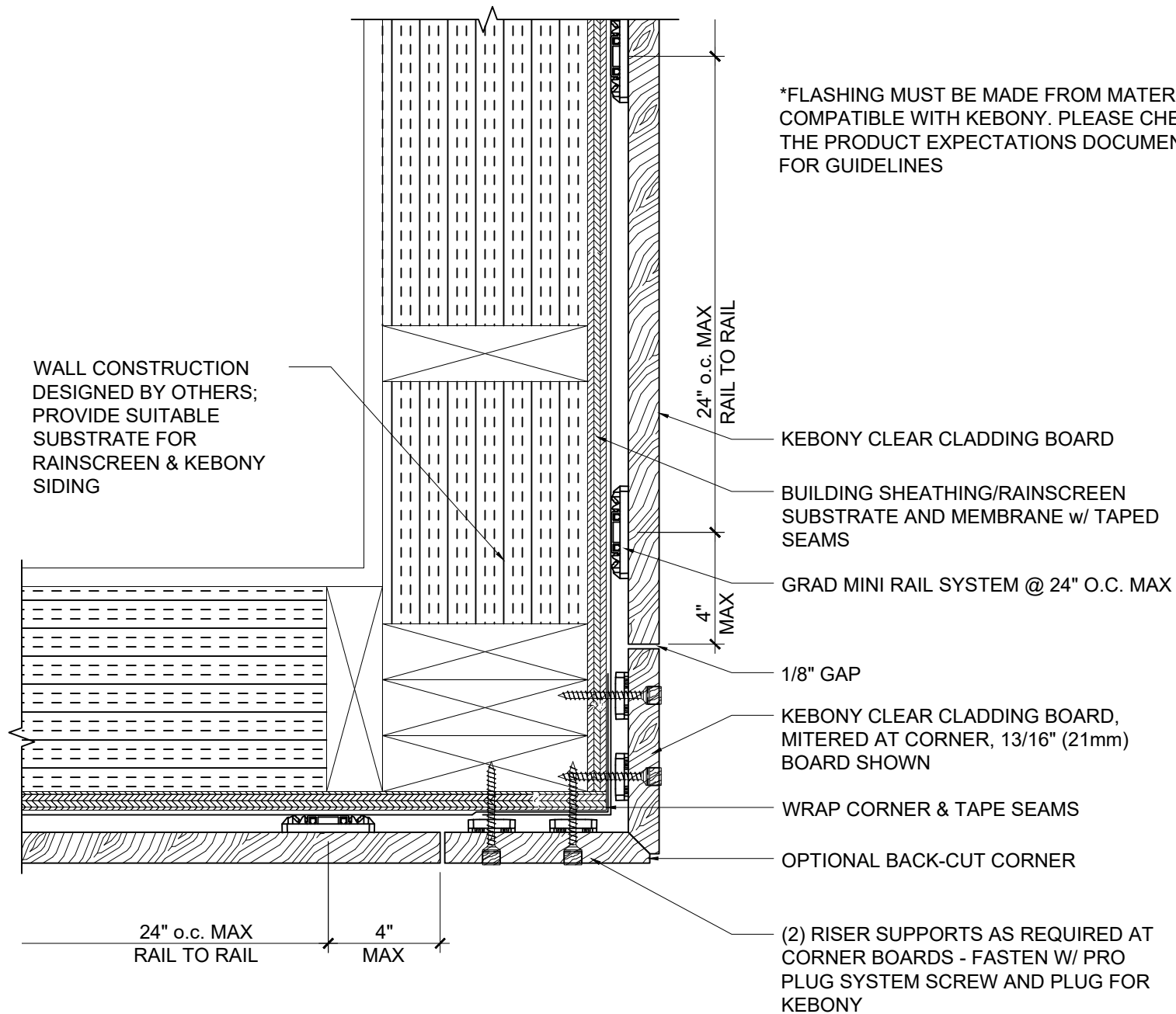


*FLASHING MUST BE MADE FROM MATERIALS COMPATIBLE WITH KEBONY. PLEASE CHECK THE PRODUCT EXPECTATIONS DOCUMENT FOR GUIDELINES



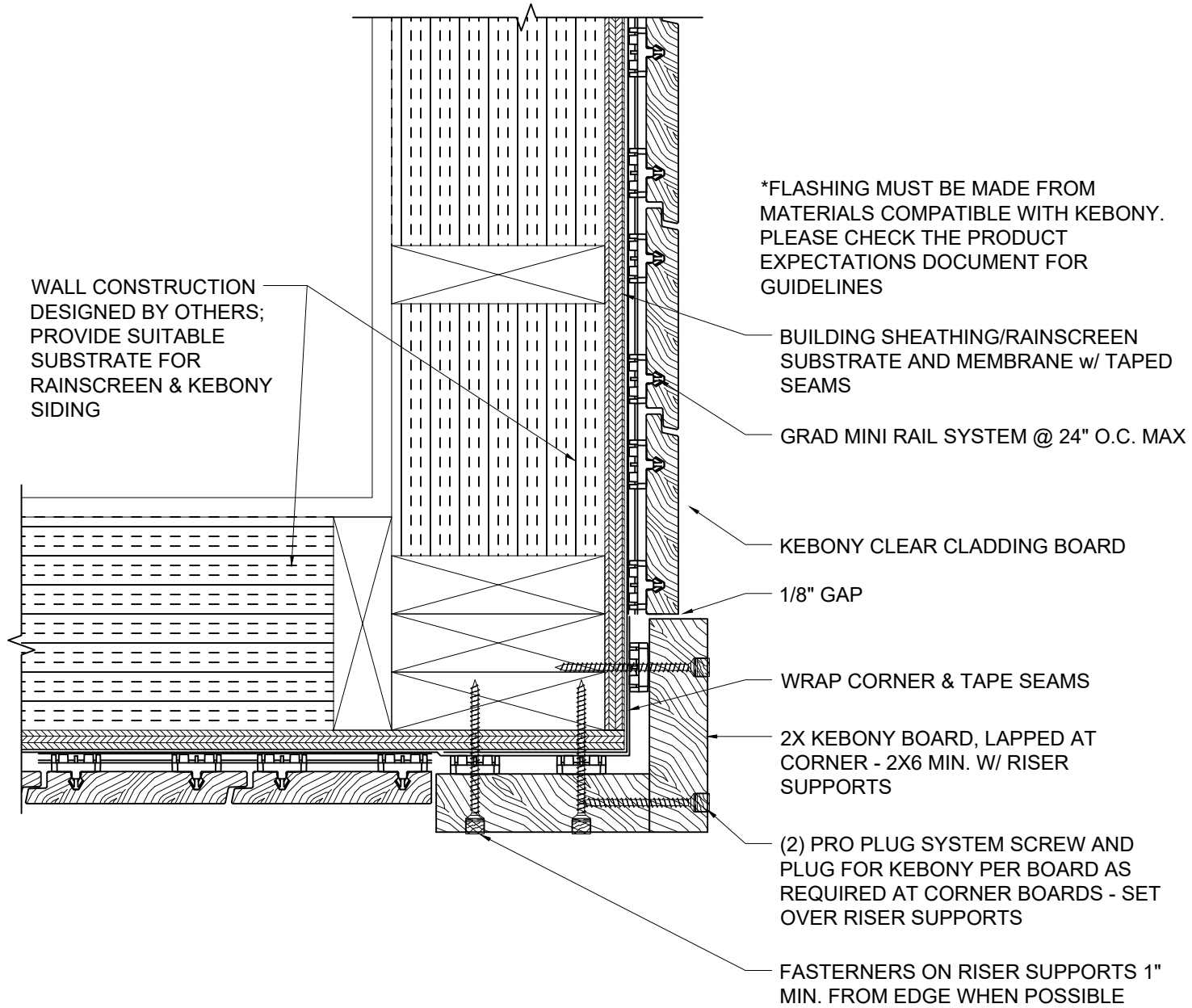
PLAN - MITERED CORNER INSTALL -
HORIZ.
3" = 1'-0"

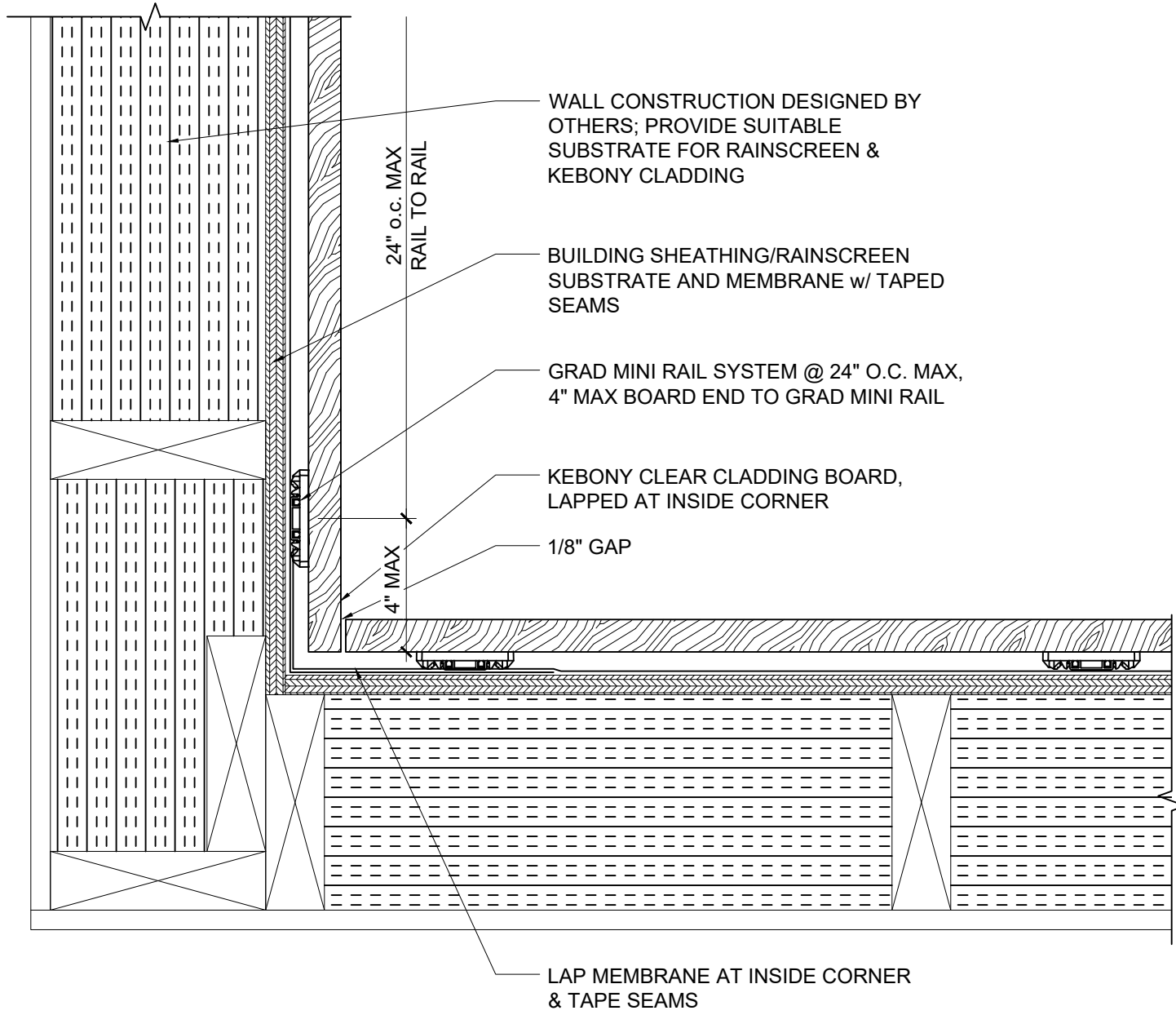
CLICK-IN
CLADDING™
SYSTEM

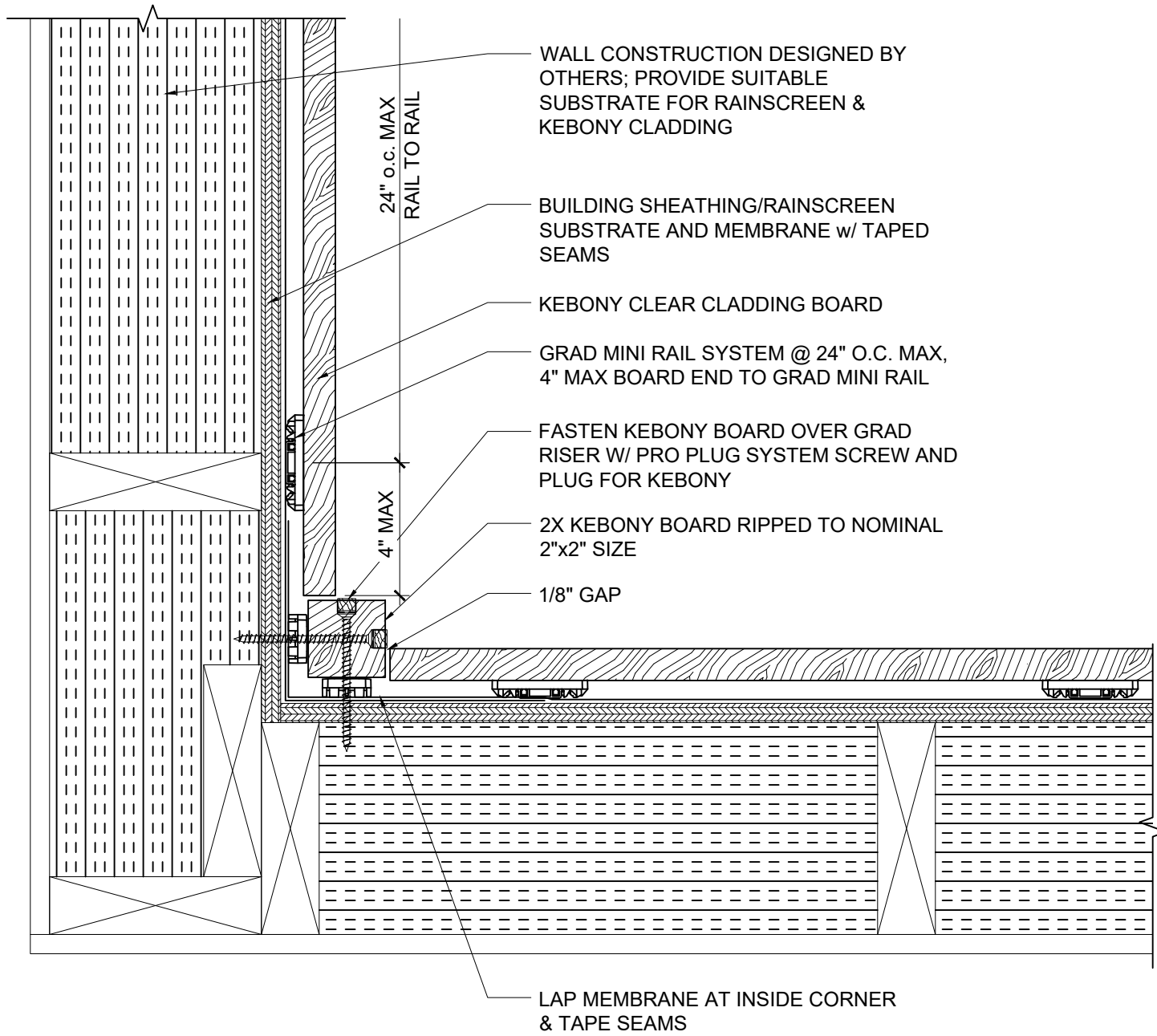


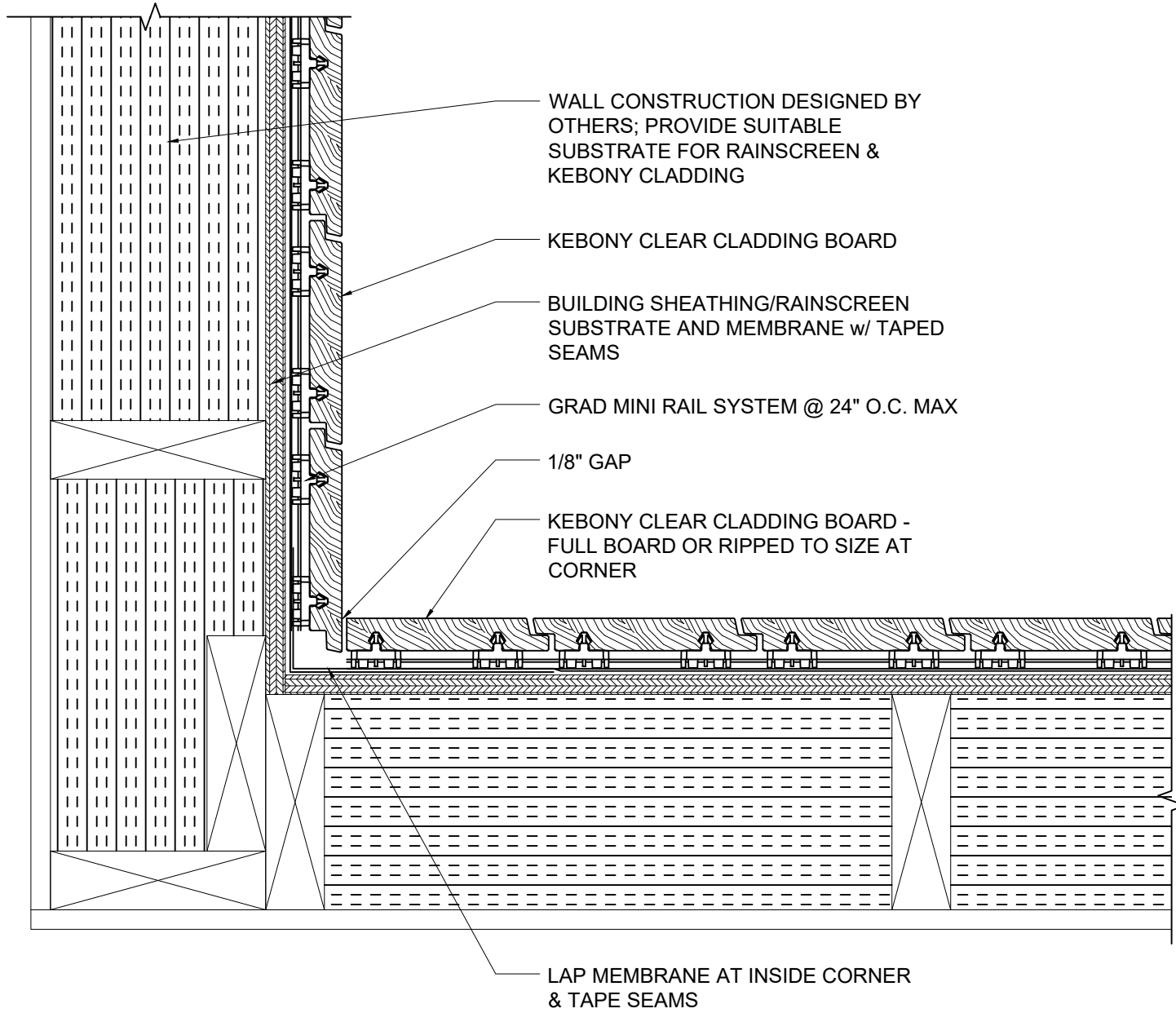
DATE 08/13/23
DRAWN BY MR

D1.3

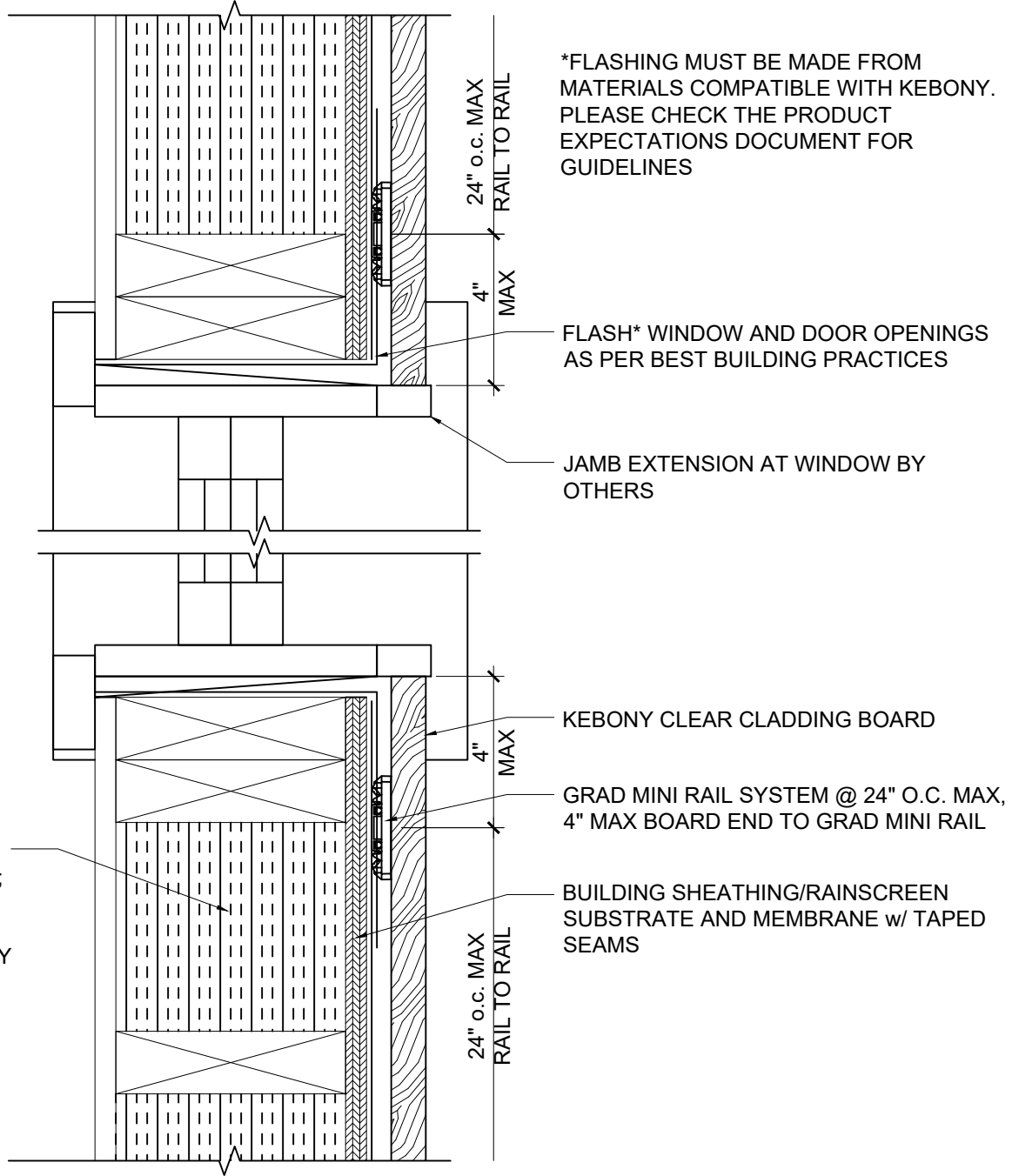




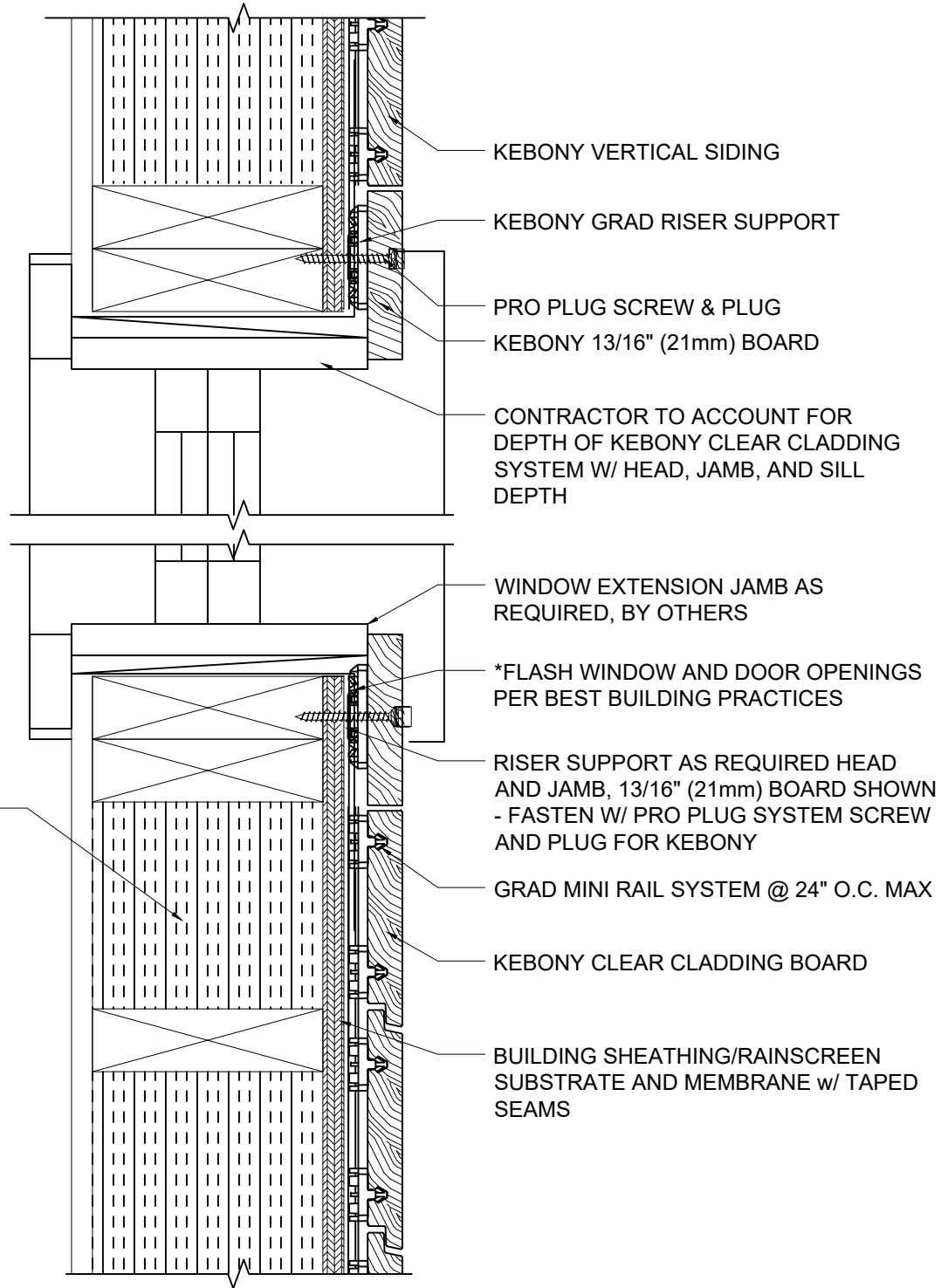


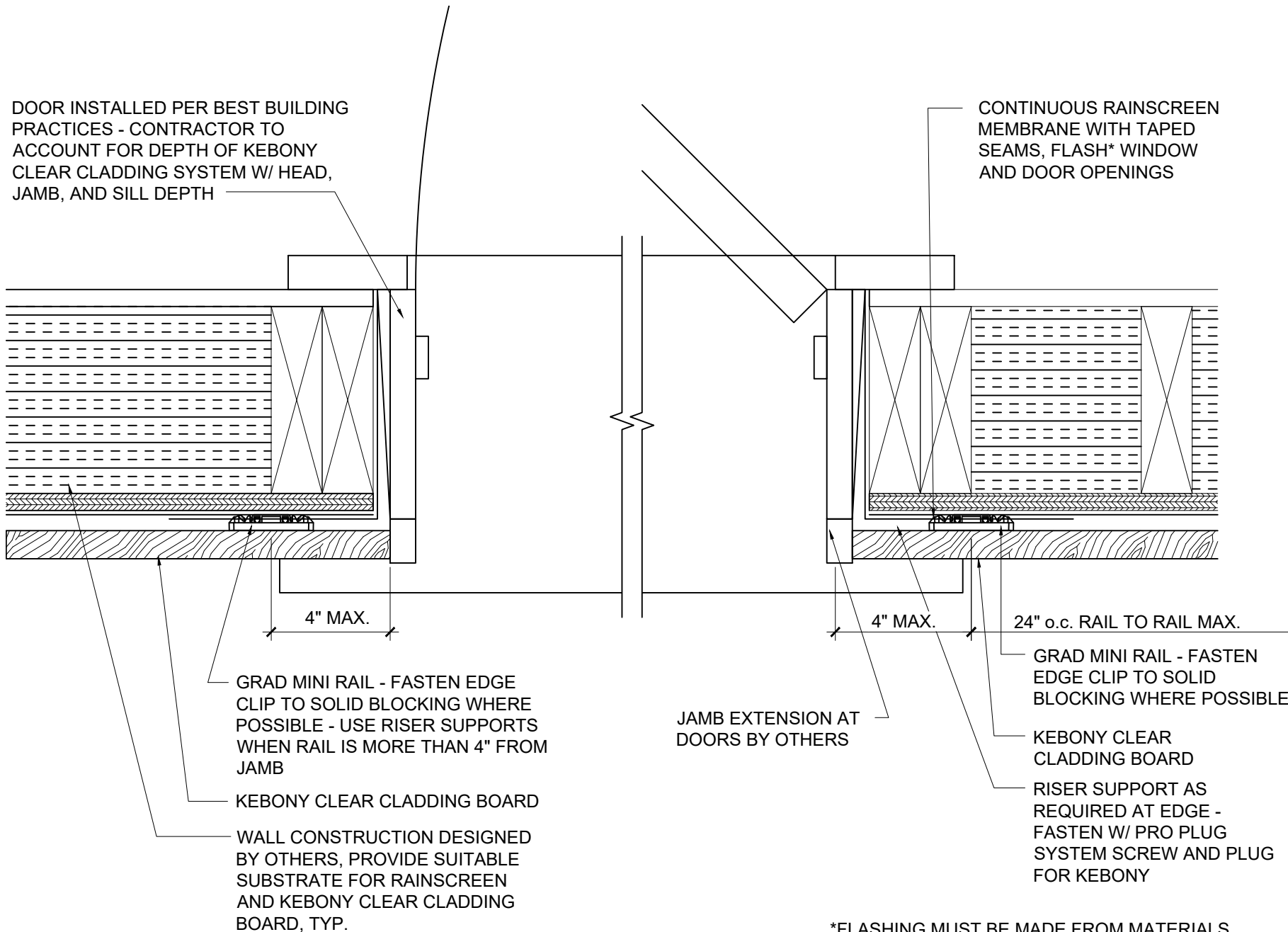


WALL CONSTRUCTION
DESIGNED BY OTHERS;
PROVIDE SUITABLE
SUBSTRATE FOR
RAINSCREEN & KEBONY
CLADDING

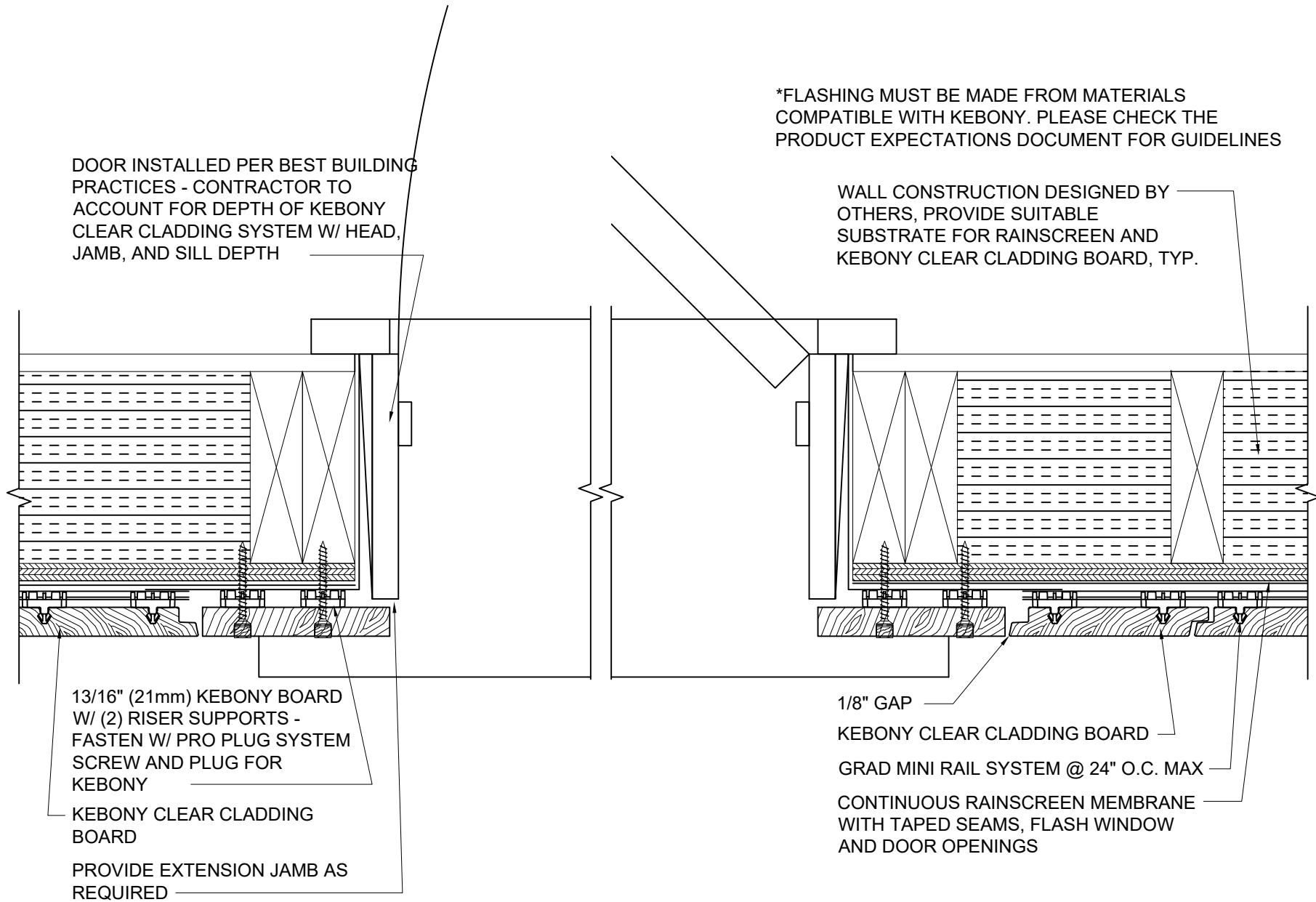


WALL CONSTRUCTION
DESIGNED BY OTHERS;
PROVIDE SUITABLE
SUBSTRATE FOR
RAINSCREEN & KEBONY
SIDING

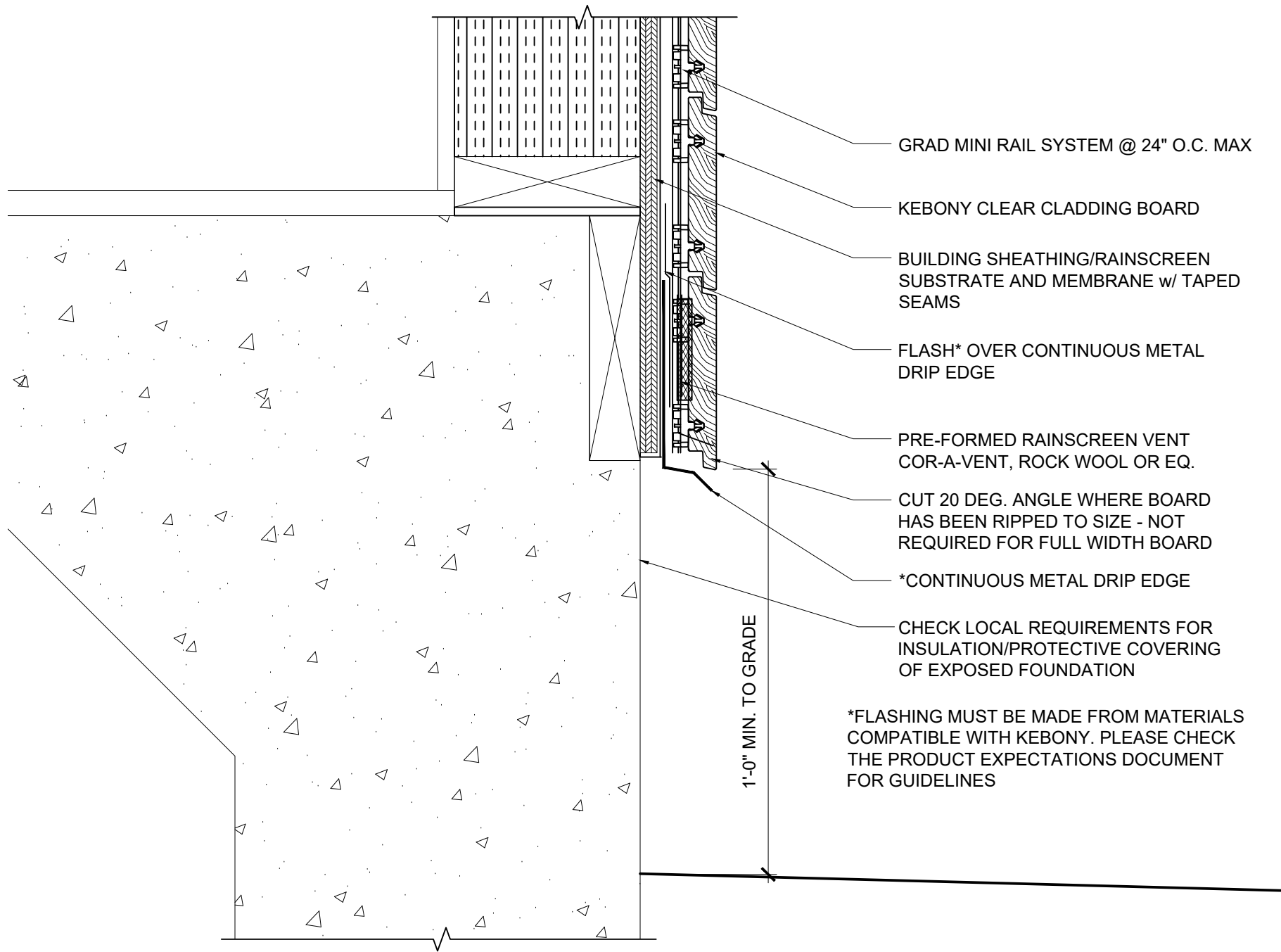


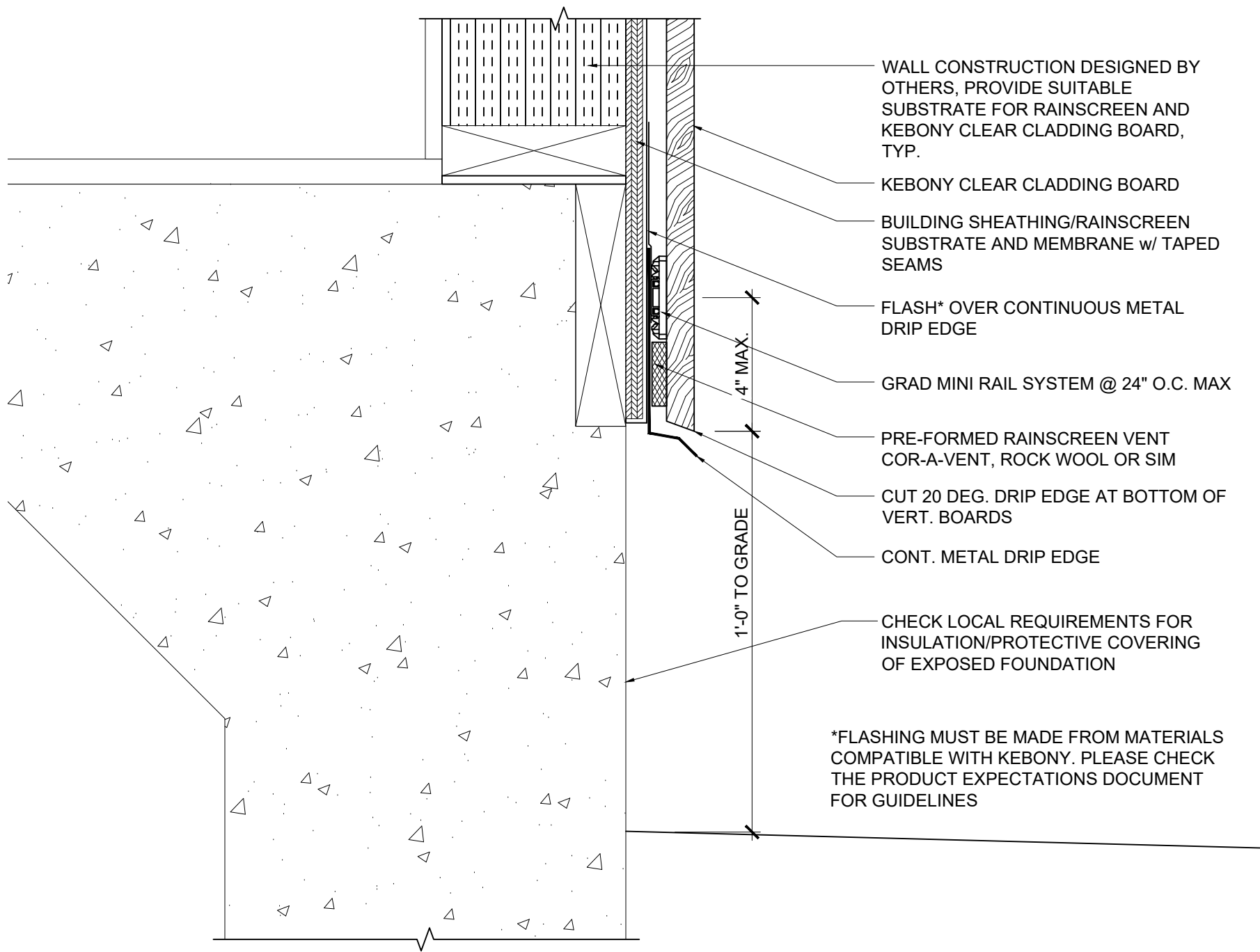


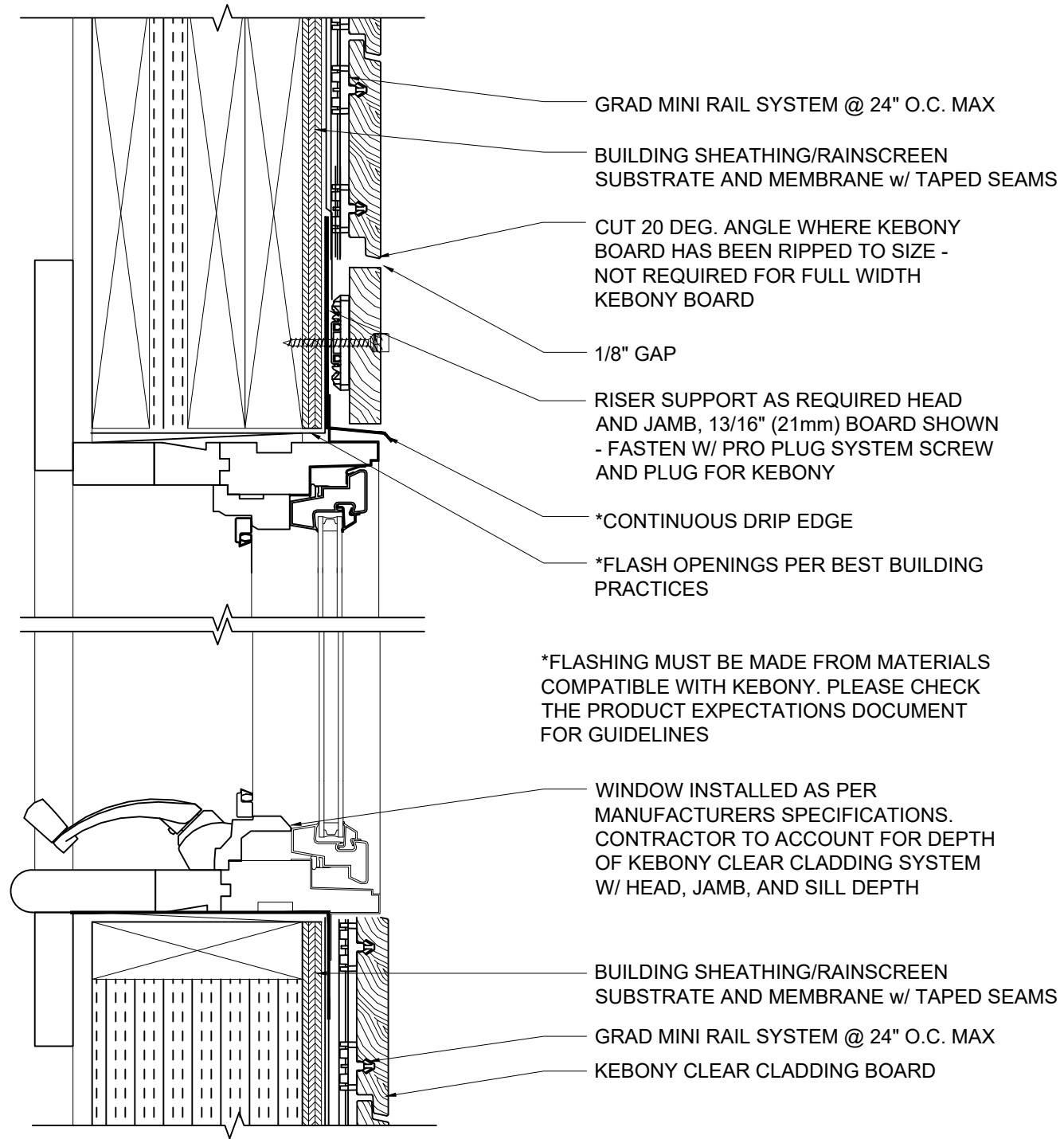
*FLASHING MUST BE MADE FROM MATERIALS COMPATIBLE WITH KEBONY. PLEASE CHECK THE PRODUCT EXPECTATIONS DOCUMENT FOR GUIDELINES.

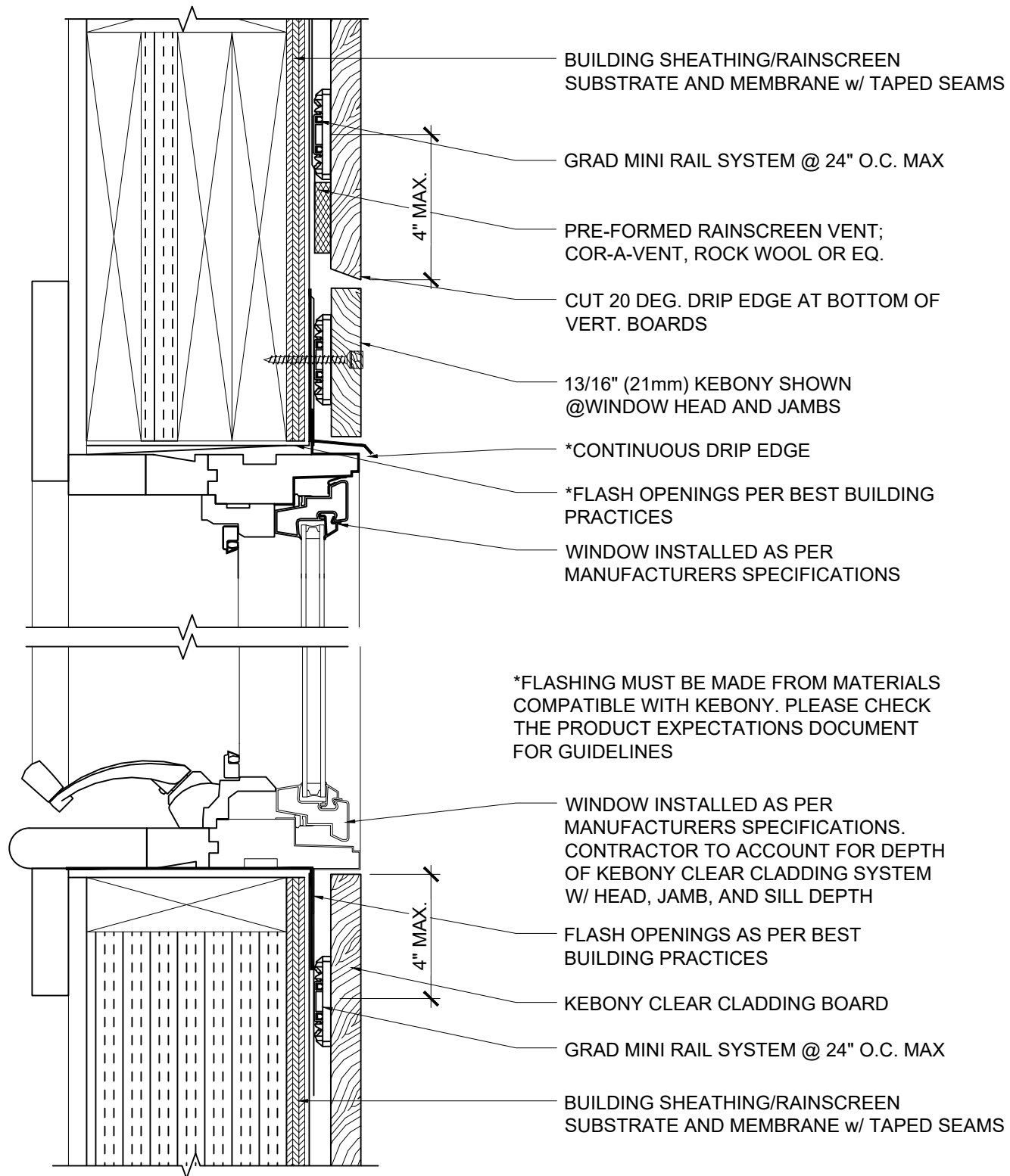


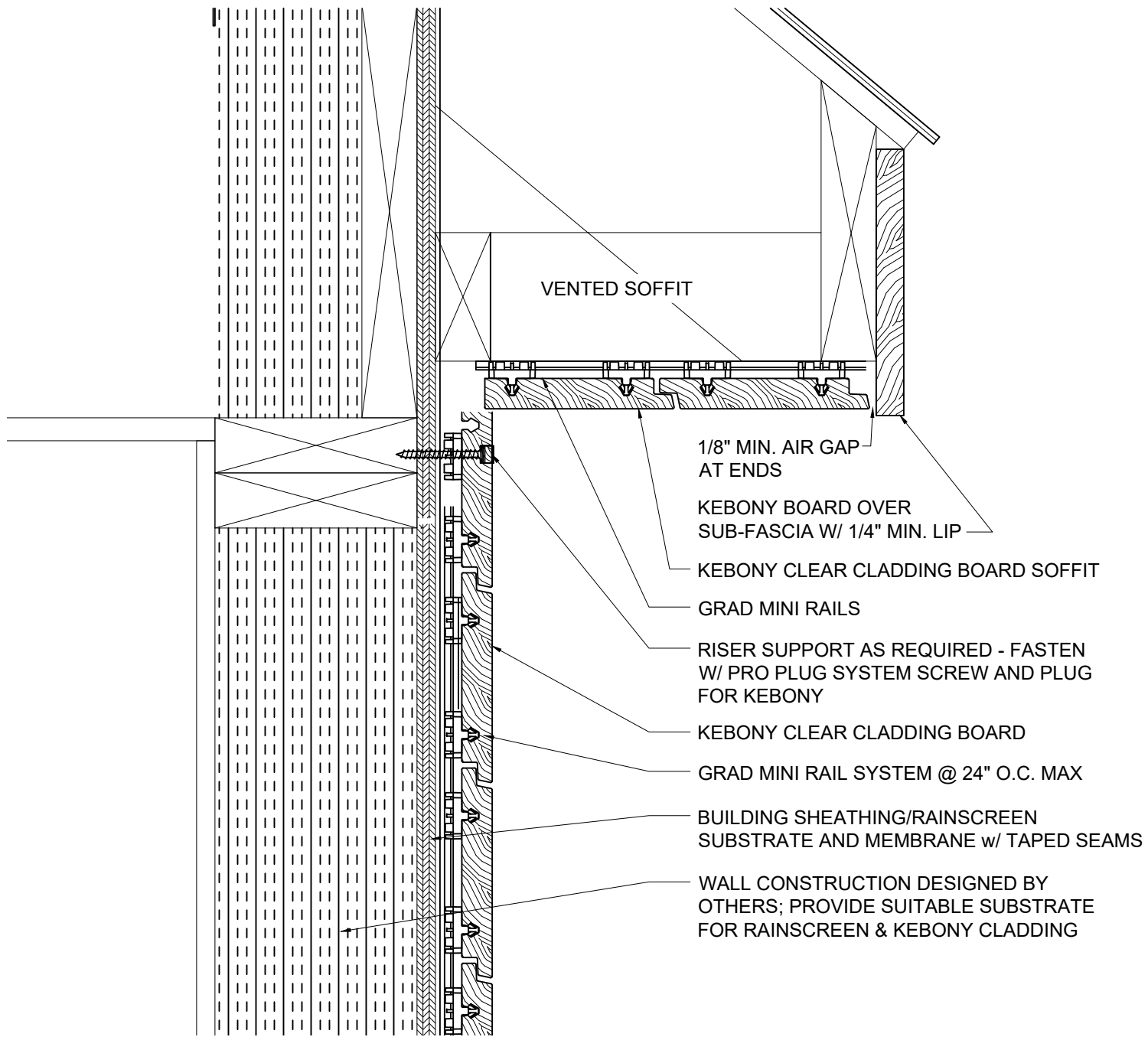
	CLICK-IN CLADDING™ SYSTEM		DOOR JAMB - VERTICAL 3" = 1'-0"	DATE 08/13/23 DRAWN BY MR	D1.11
---	---------------------------	--	---	------------------------------	--------------

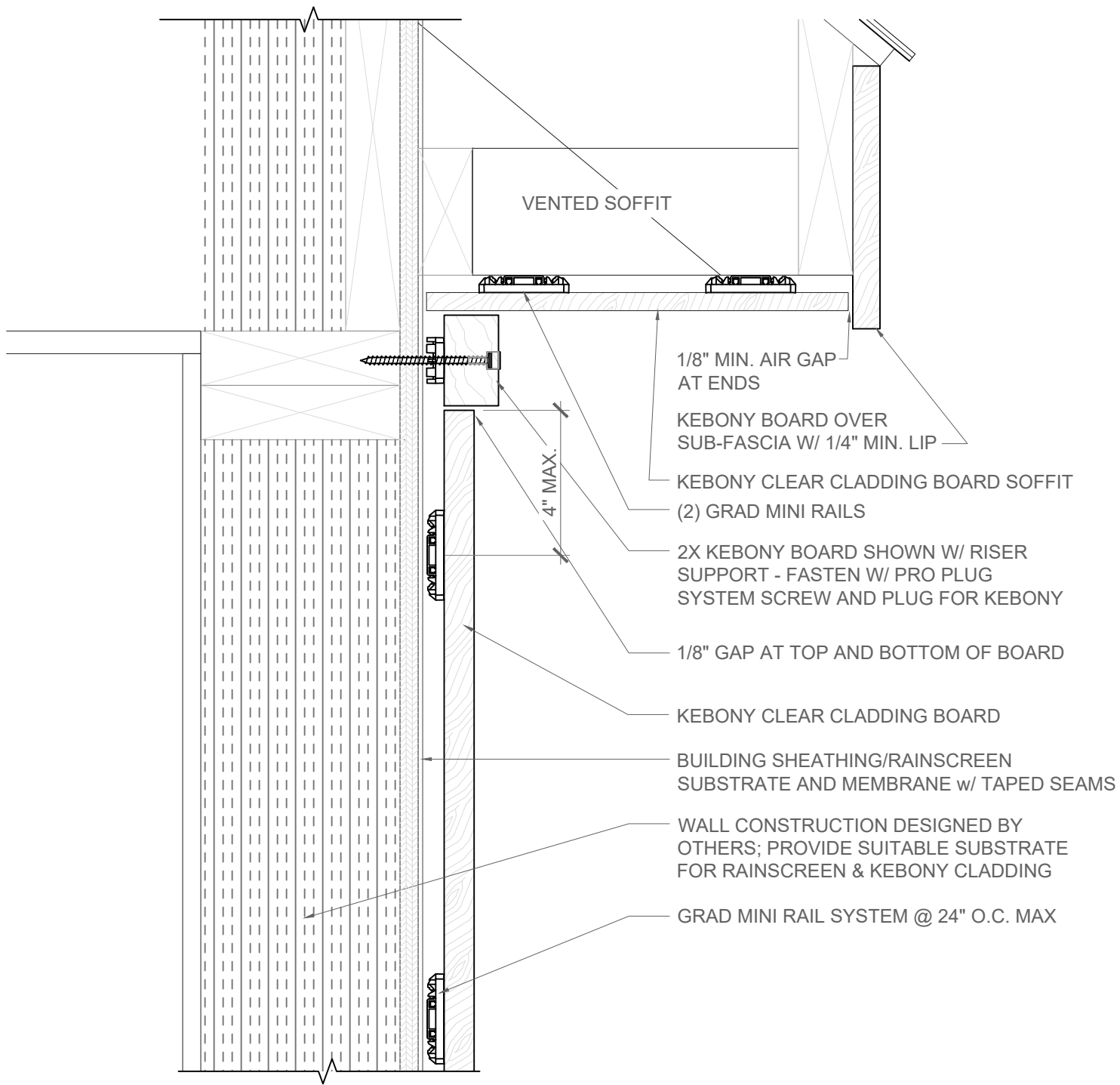


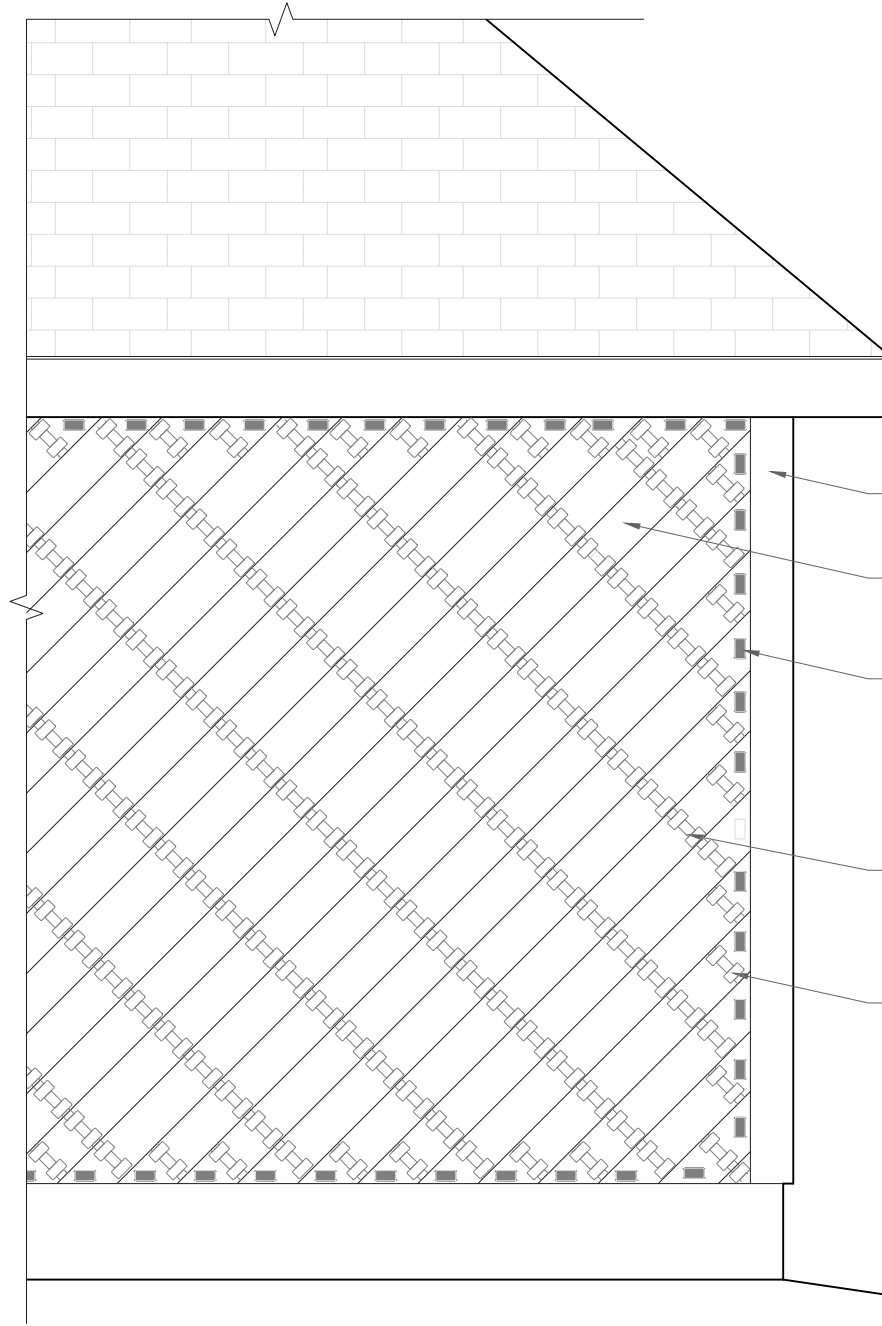












21 mm KEBONY CLEAR CLADDING BOARD AT CORNER, OPTIONAL

KEBONY CLEAR CLADDING BOARD AT 45 DEG

GRAD MINI RISER SUPPORT AT END OF KEBONY CLEAR CLADDING BOARD AS REQ'D - FASTEN W/ PRO PLUG SYSTEM SCREW AND PLUG FOR KEBONY
(GRAD MINI RISER SHOWN AS GRAY)

GRAD MINI RAIL SYSTEM @ 16" O.C. MAX INSTALL AT 45 DEG, PERPENDICULAR TO KEBONY CLEAR CLADDING BOARDS

GRAD MINI RAIL SYSTEM INFILL RAILS AS REQ'D AT ENDS

NOTE - THERE NEEDS TO BE A FASTENER/CLIP NO FURTHER THAN 4" FROM THE EDGE. USE RAILS TO INFILL WHEN CONDITION ARISES.