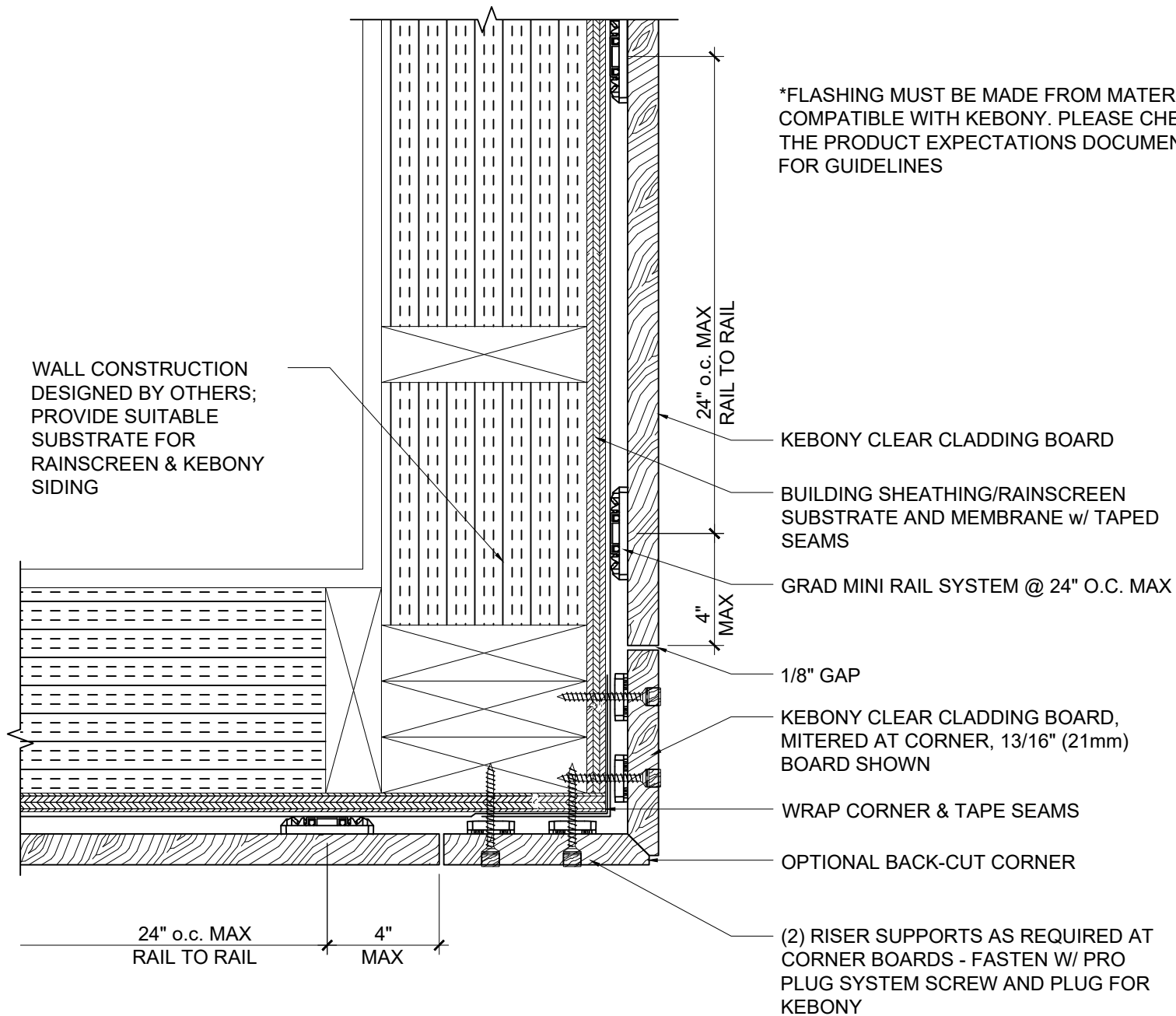
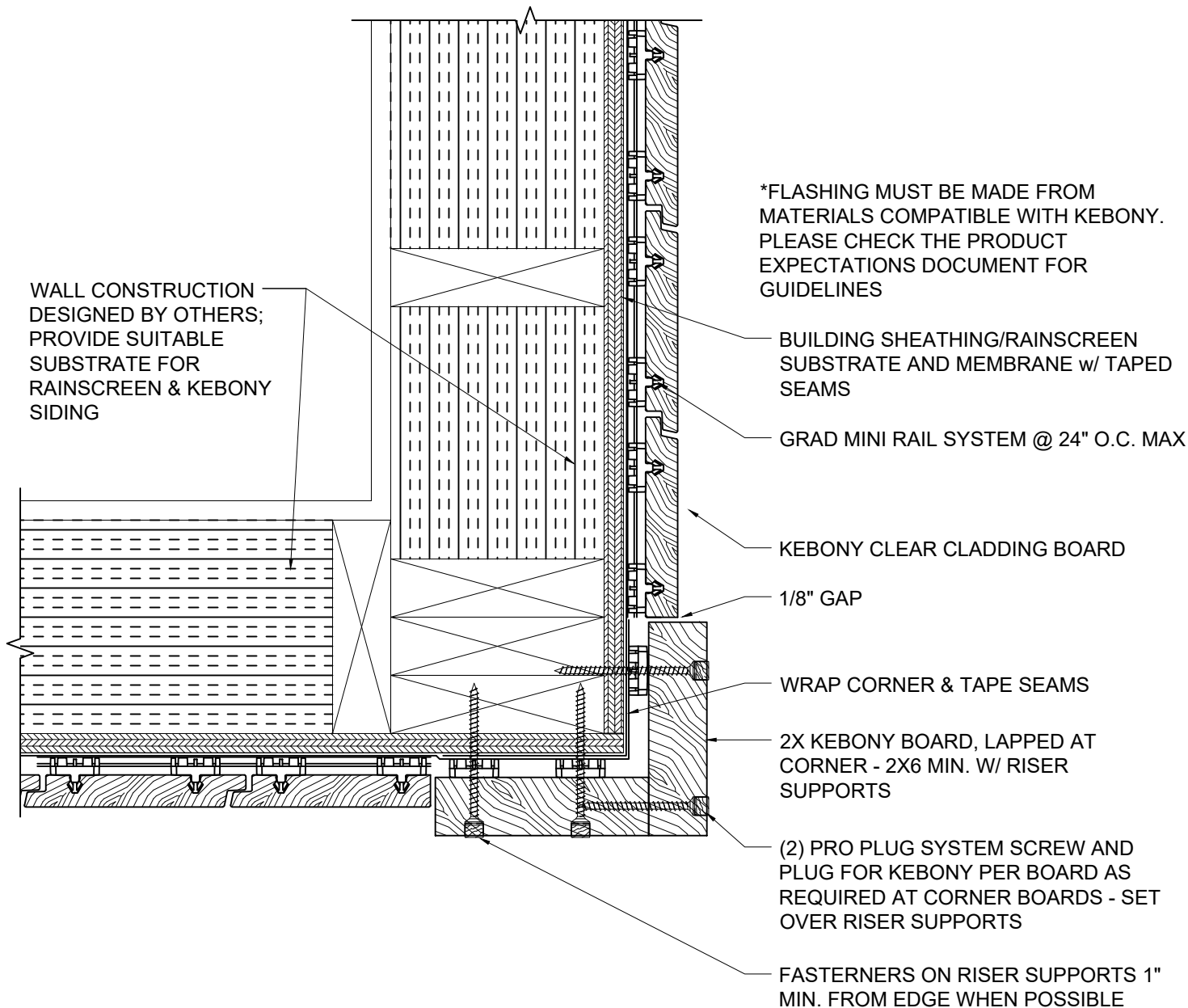
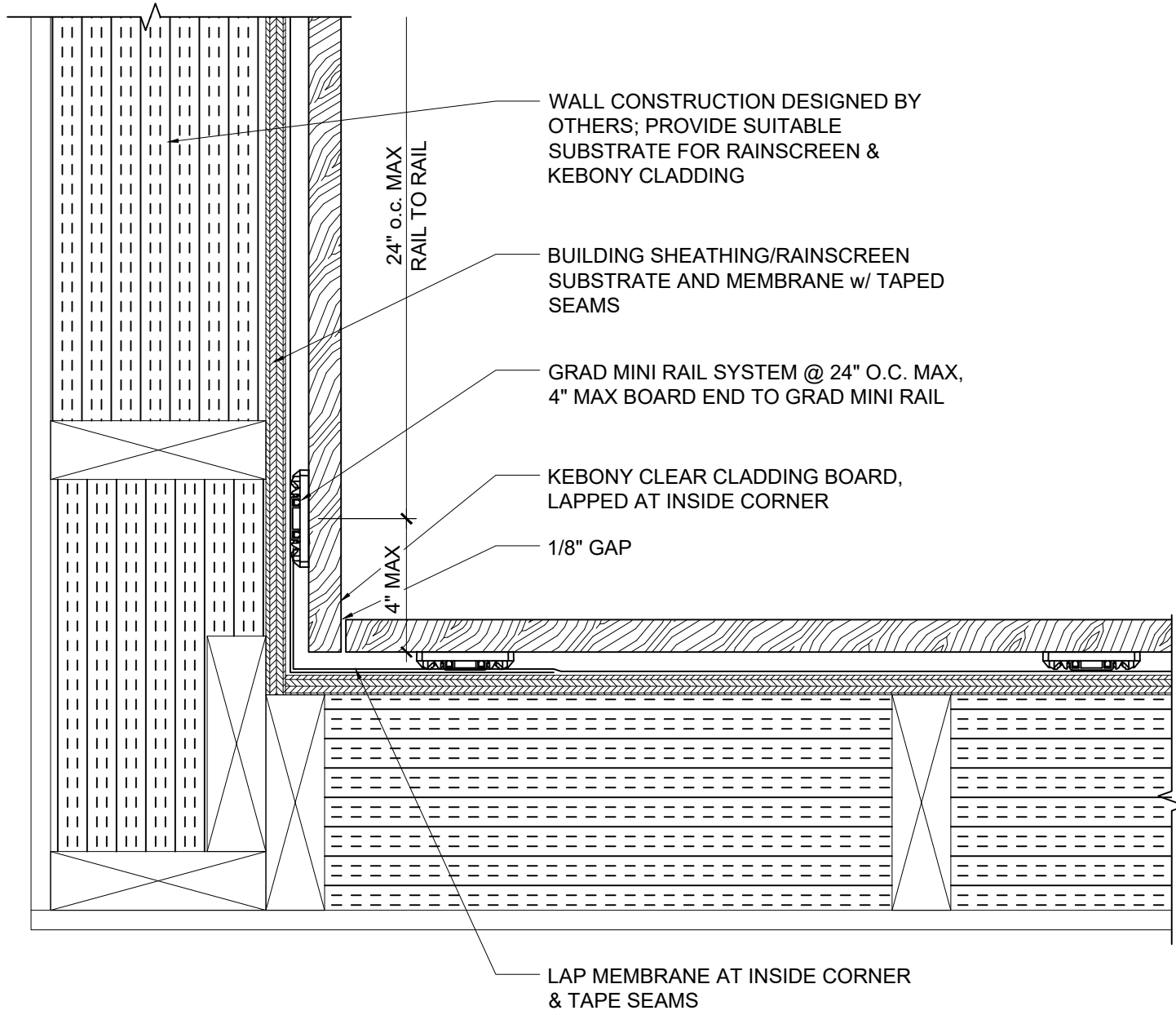
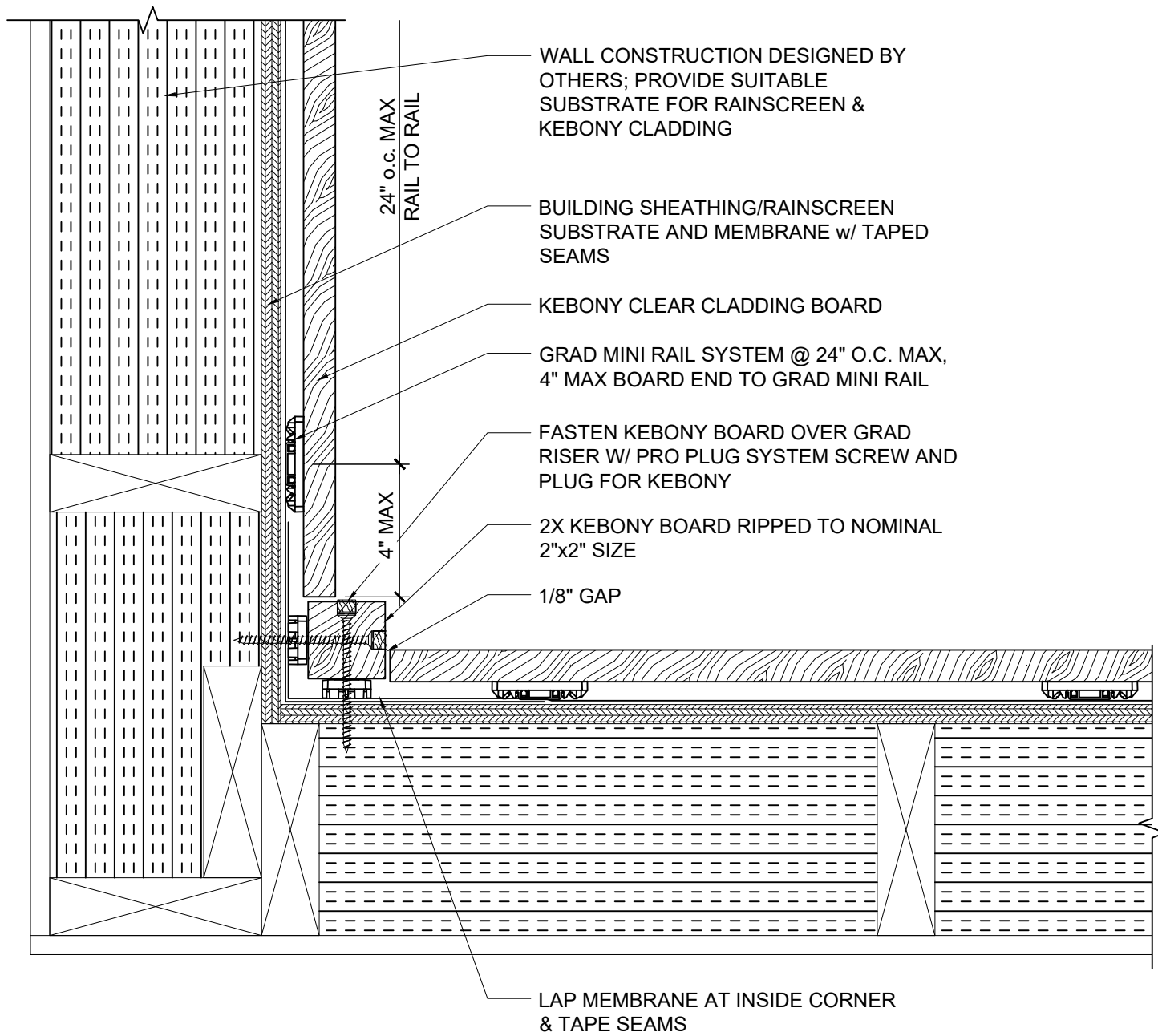


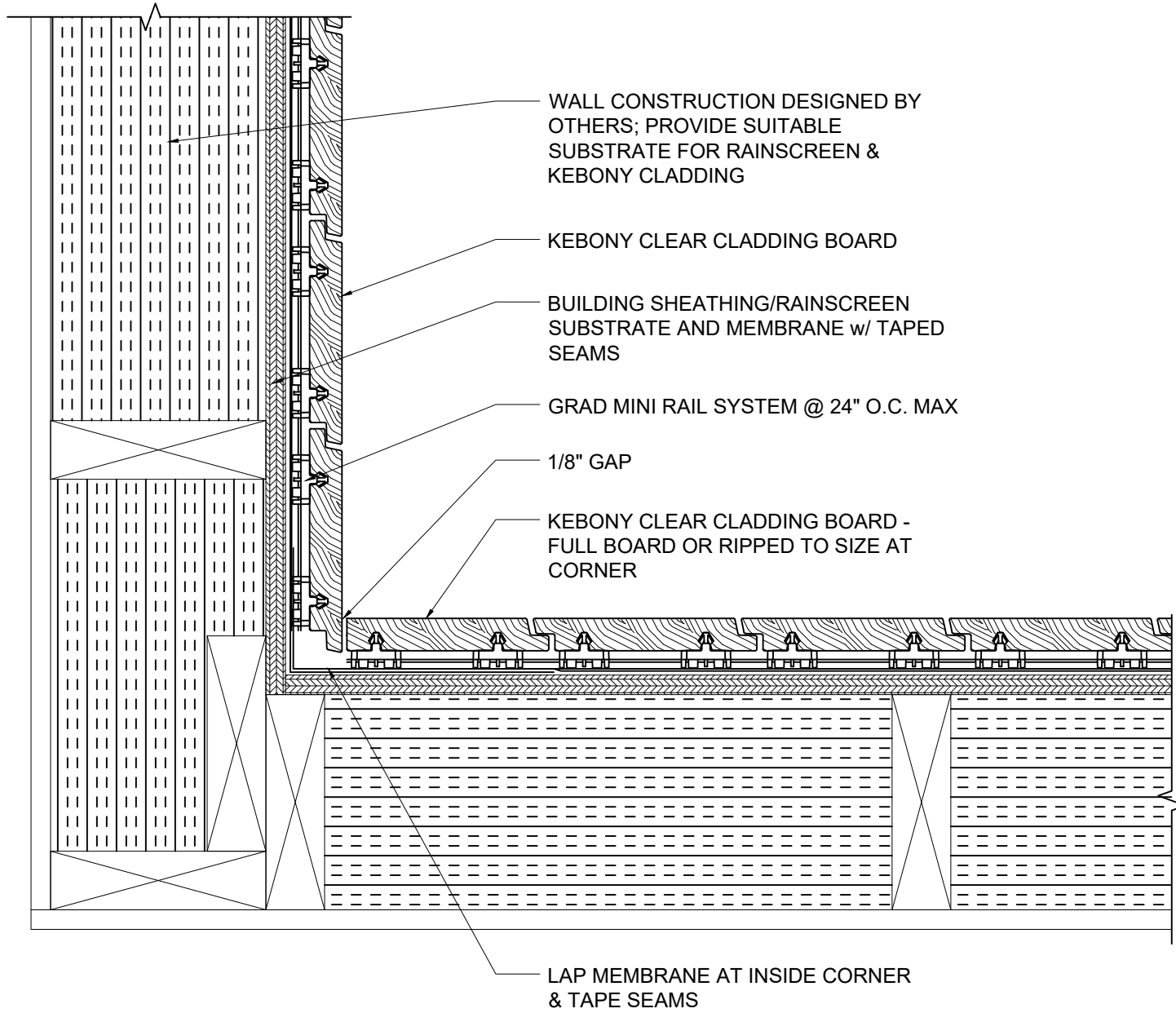
\*FLASHING MUST BE MADE FROM MATERIALS COMPATIBLE WITH KEBONY. PLEASE CHECK THE PRODUCT EXPECTATIONS DOCUMENT FOR GUIDELINES



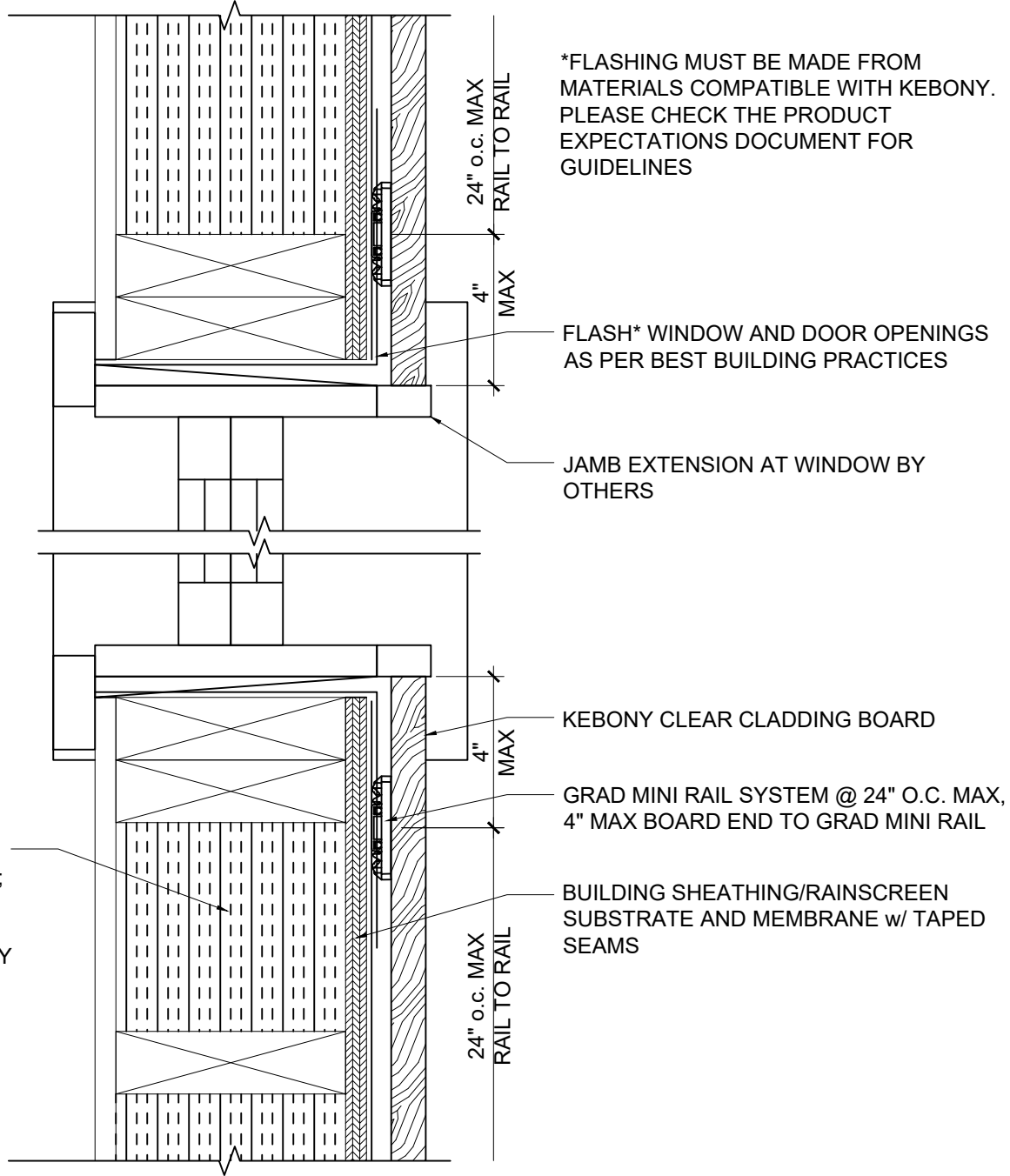




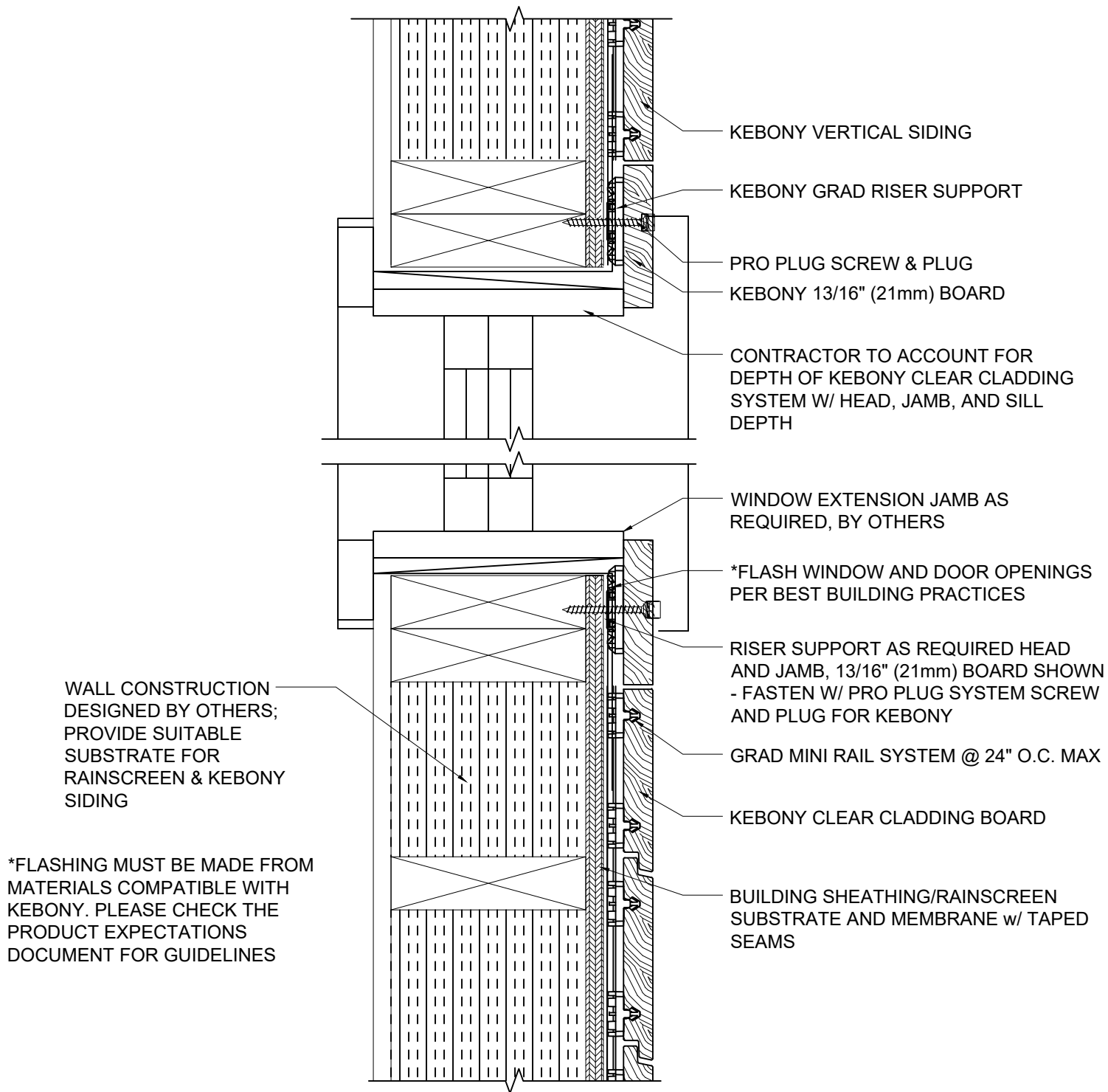


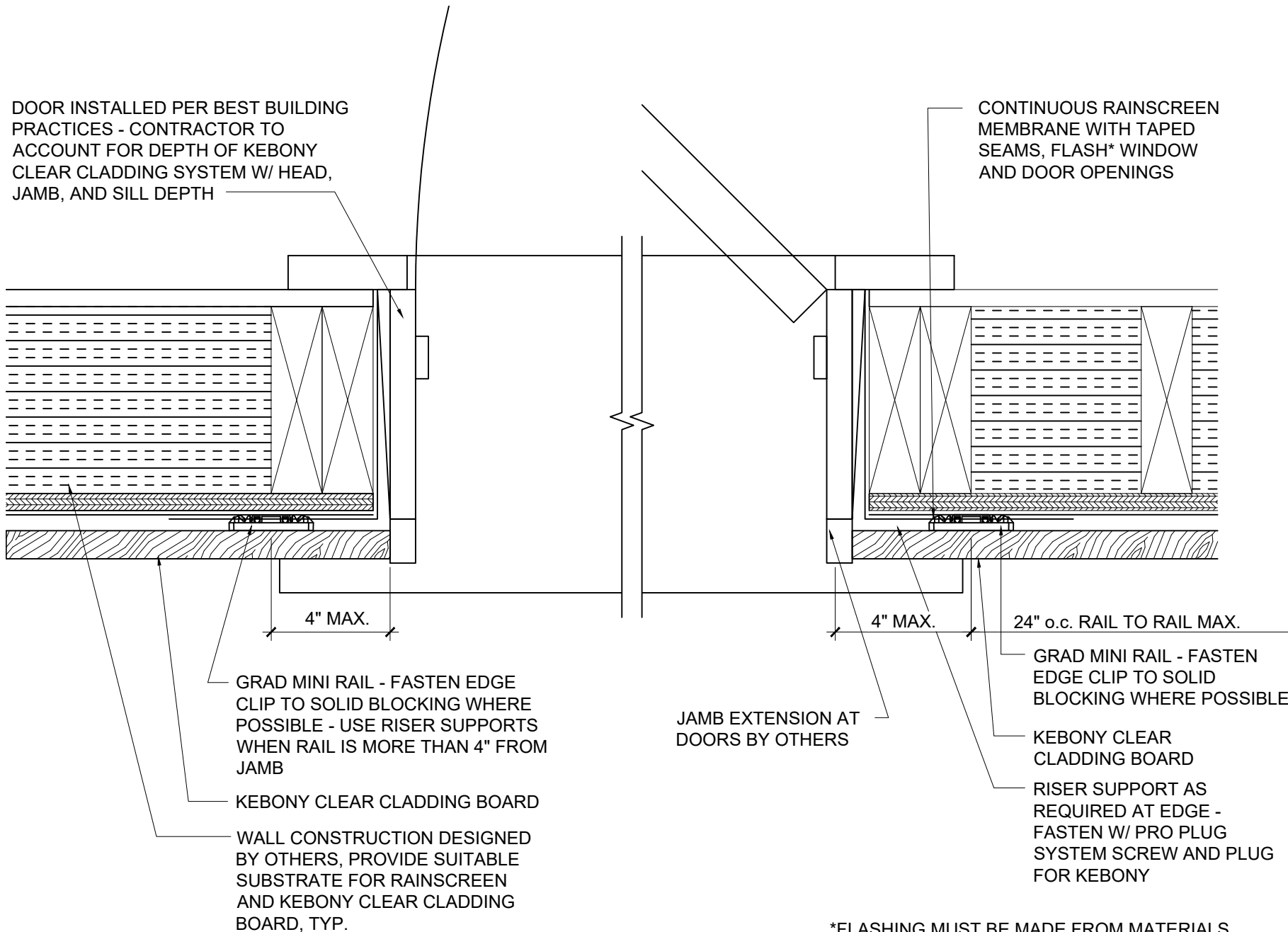


WALL CONSTRUCTION  
DESIGNED BY OTHERS;  
PROVIDE SUITABLE  
SUBSTRATE FOR  
RAINSCREEN & KEBONY  
CLADDING

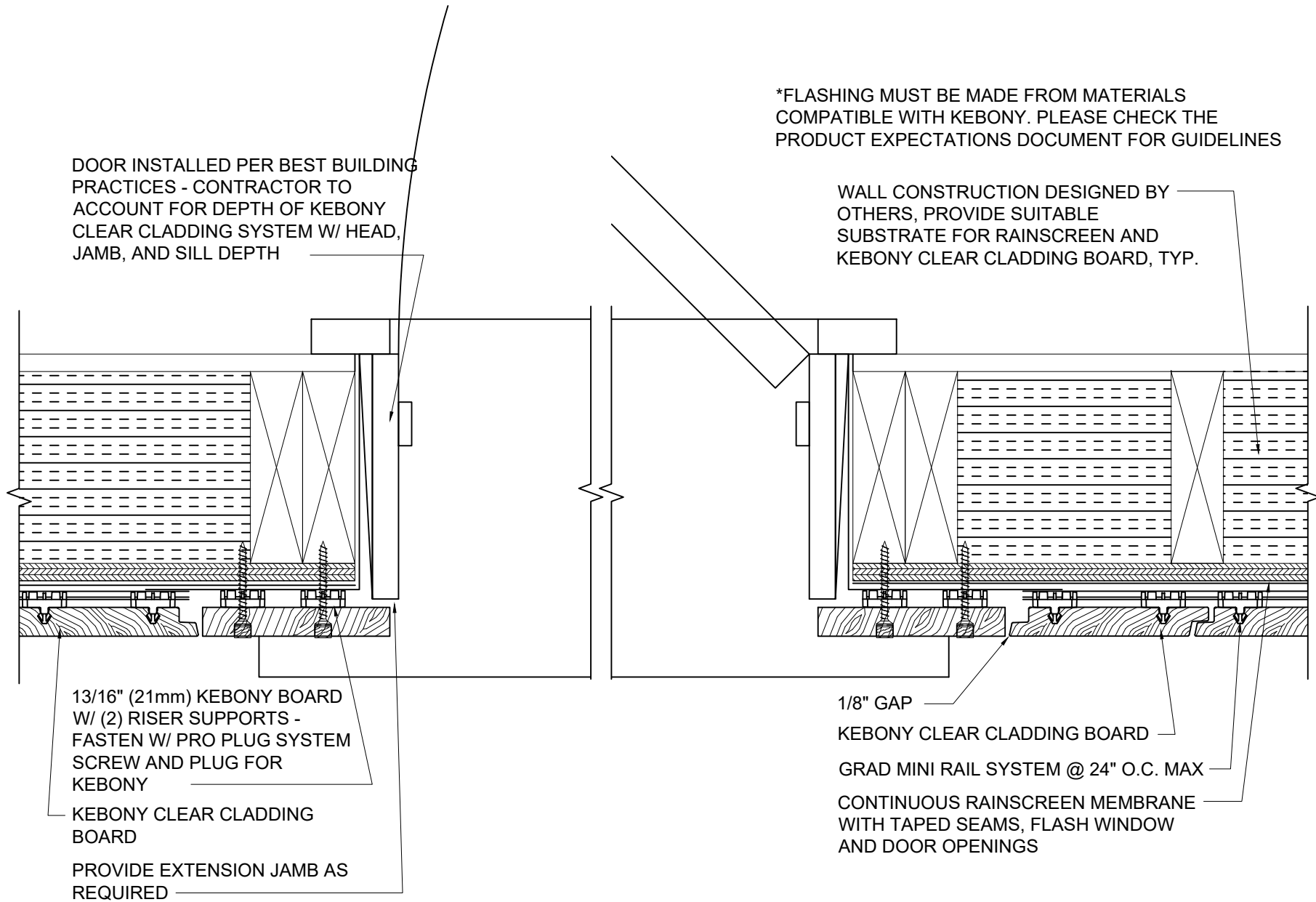




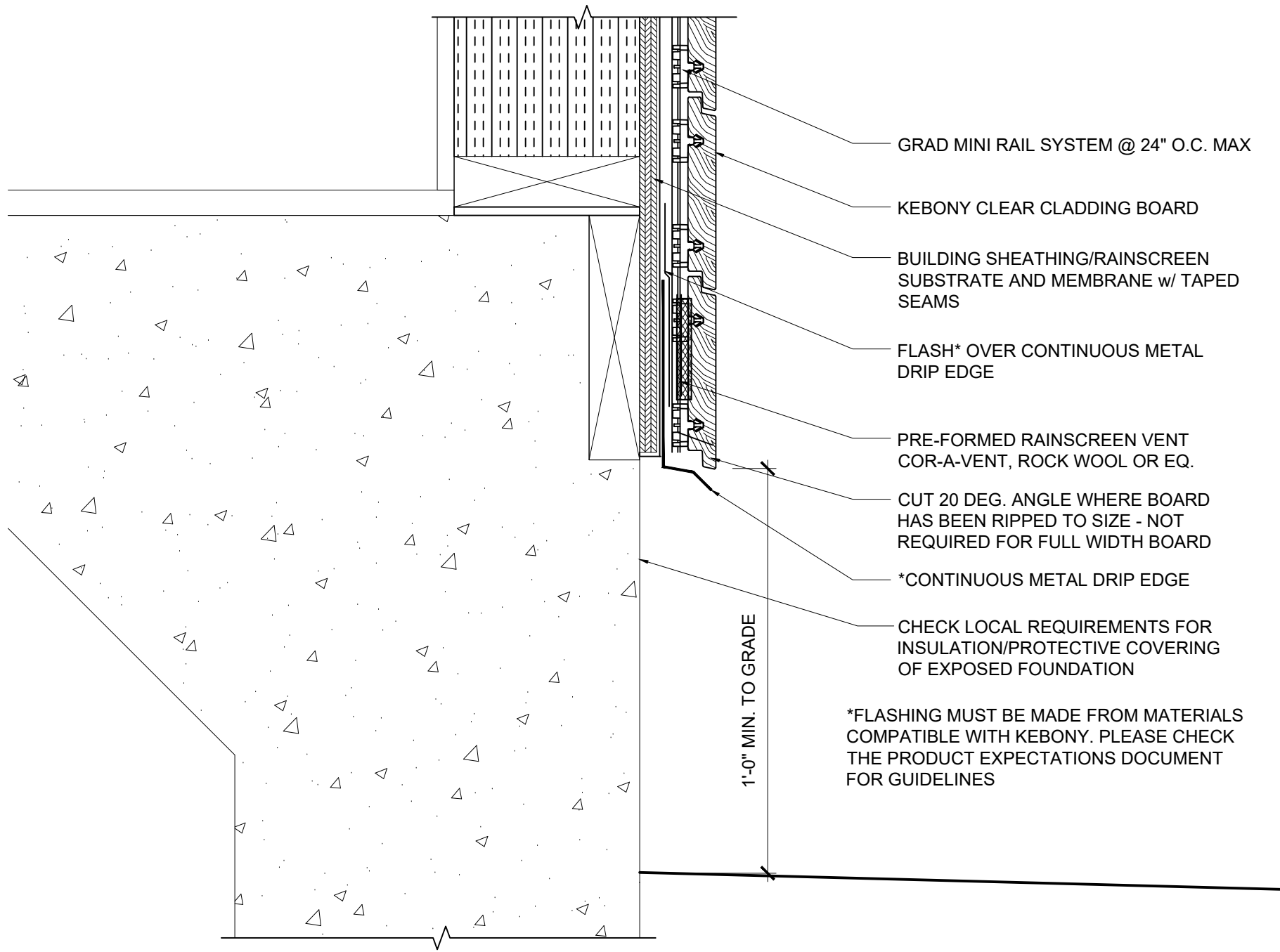


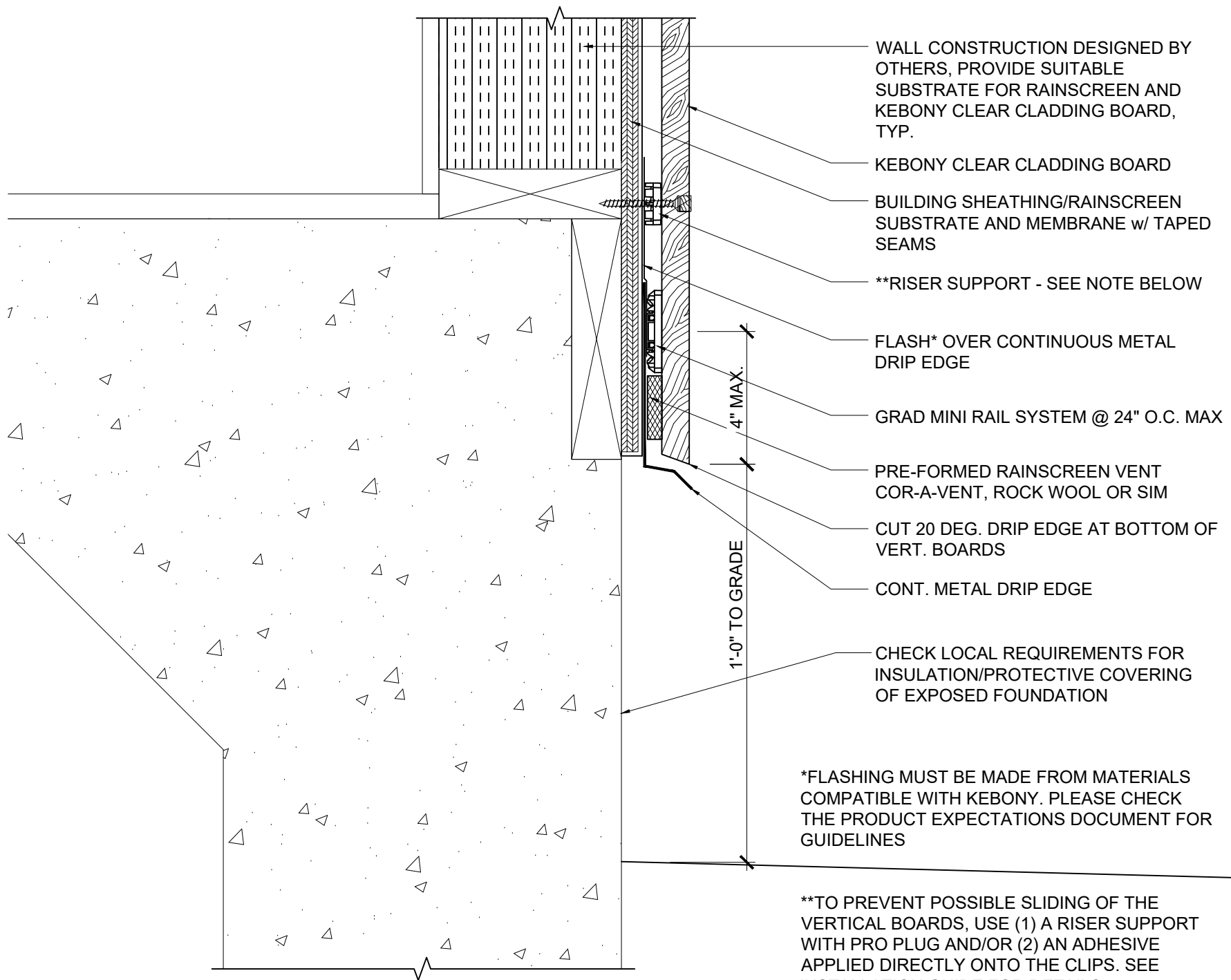


\*FLASHING MUST BE MADE FROM MATERIALS COMPATIBLE WITH KEBONY. PLEASE CHECK THE PRODUCT EXPECTATIONS DOCUMENT FOR GUIDELINES.



	CLICK-IN CLADDING™ SYSTEM		DOOR JAMB - VERTICAL 3" = 1'-0"	DATE 08/13/23 DRAWN BY MR	D1.11
---	---------------------------	--	------------------------------------	------------------------------	-------





WALL CONSTRUCTION DESIGNED BY OTHERS, PROVIDE SUITABLE SUBSTRATE FOR RAINSCREEN AND KEBONY CLEAR CLADDING BOARD, TYP.

KEBONY CLEAR CLADDING BOARD

BUILDING SHEATHING/RAINSCREEN SUBSTRATE AND MEMBRANE w/ TAPED SEAMS

\*\*RISER SUPPORT - SEE NOTE BELOW

FLASH\* OVER CONTINUOUS METAL DRIP EDGE

GRAD MINI RAIL SYSTEM @ 24" O.C. MAX

PRE-FORMED RAINSCREEN VENT COR-A-VENT, ROCK WOOL OR SIM

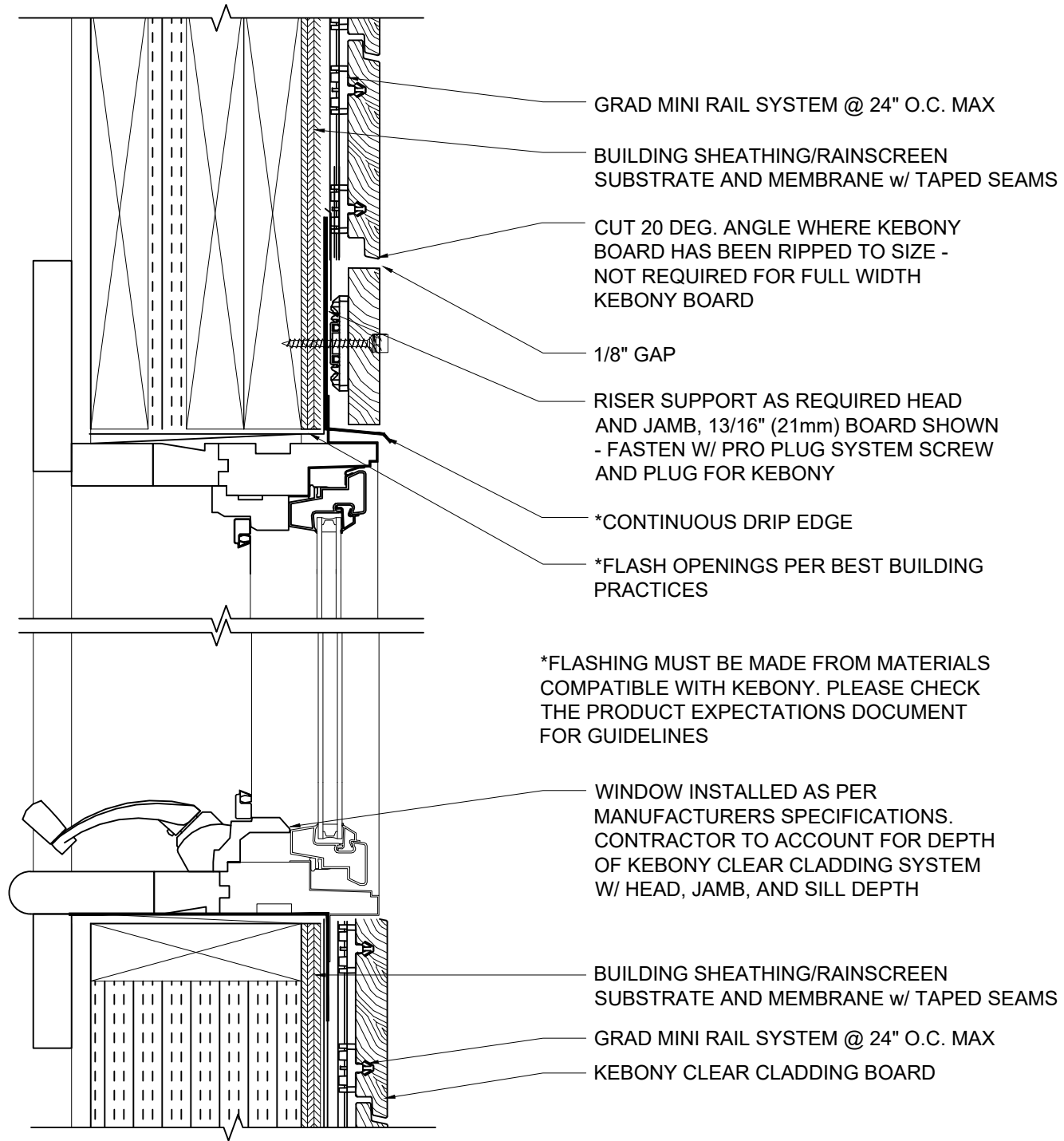
CUT 20 DEG. DRIP EDGE AT BOTTOM OF VERT. BOARDS

CONT. METAL DRIP EDGE

CHECK LOCAL REQUIREMENTS FOR INSULATION/PROTECTIVE COVERING OF EXPOSED FOUNDATION

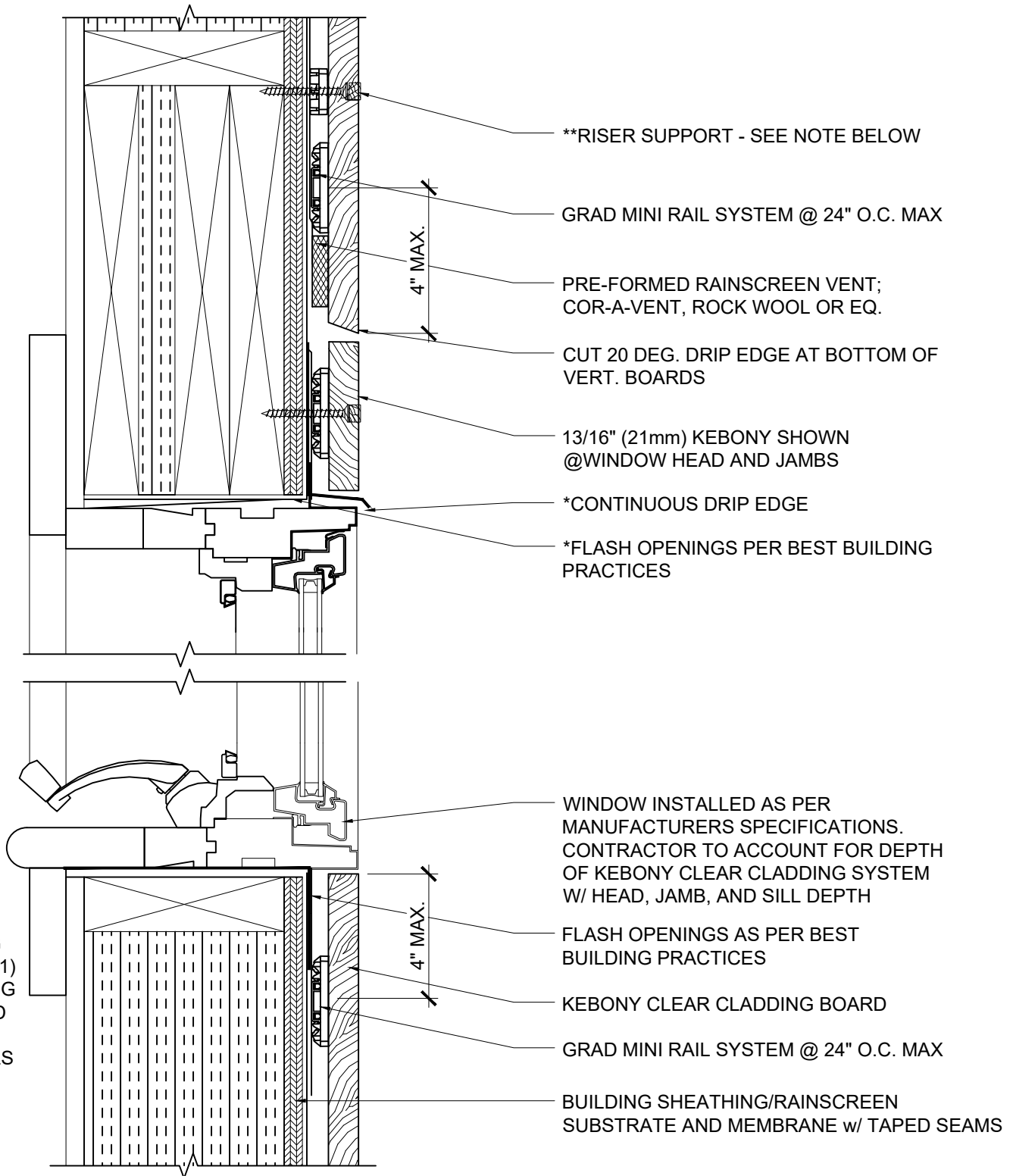
\*FLASHING MUST BE MADE FROM MATERIALS COMPATIBLE WITH KEBONY. PLEASE CHECK THE PRODUCT EXPECTATIONS DOCUMENT FOR GUIDELINES

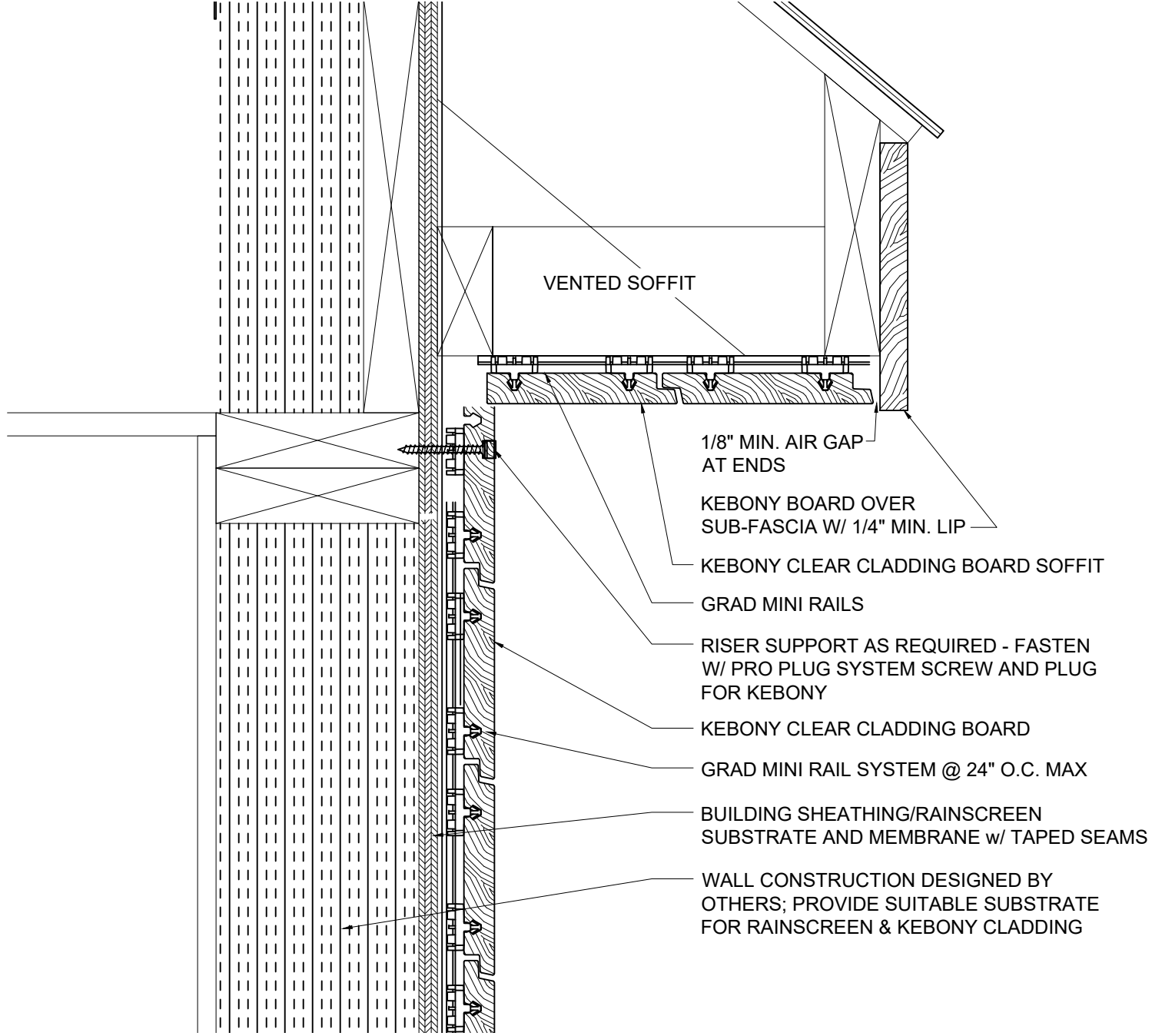
\*\*TO PREVENT POSSIBLE SLIDING OF THE VERTICAL BOARDS, USE (1) A RISER SUPPORT WITH PRO PLUG AND/OR (2) AN ADHESIVE APPLIED DIRECTLY ONTO THE CLIPS. SEE INSTALLATION GUIDE FOR DETAILS



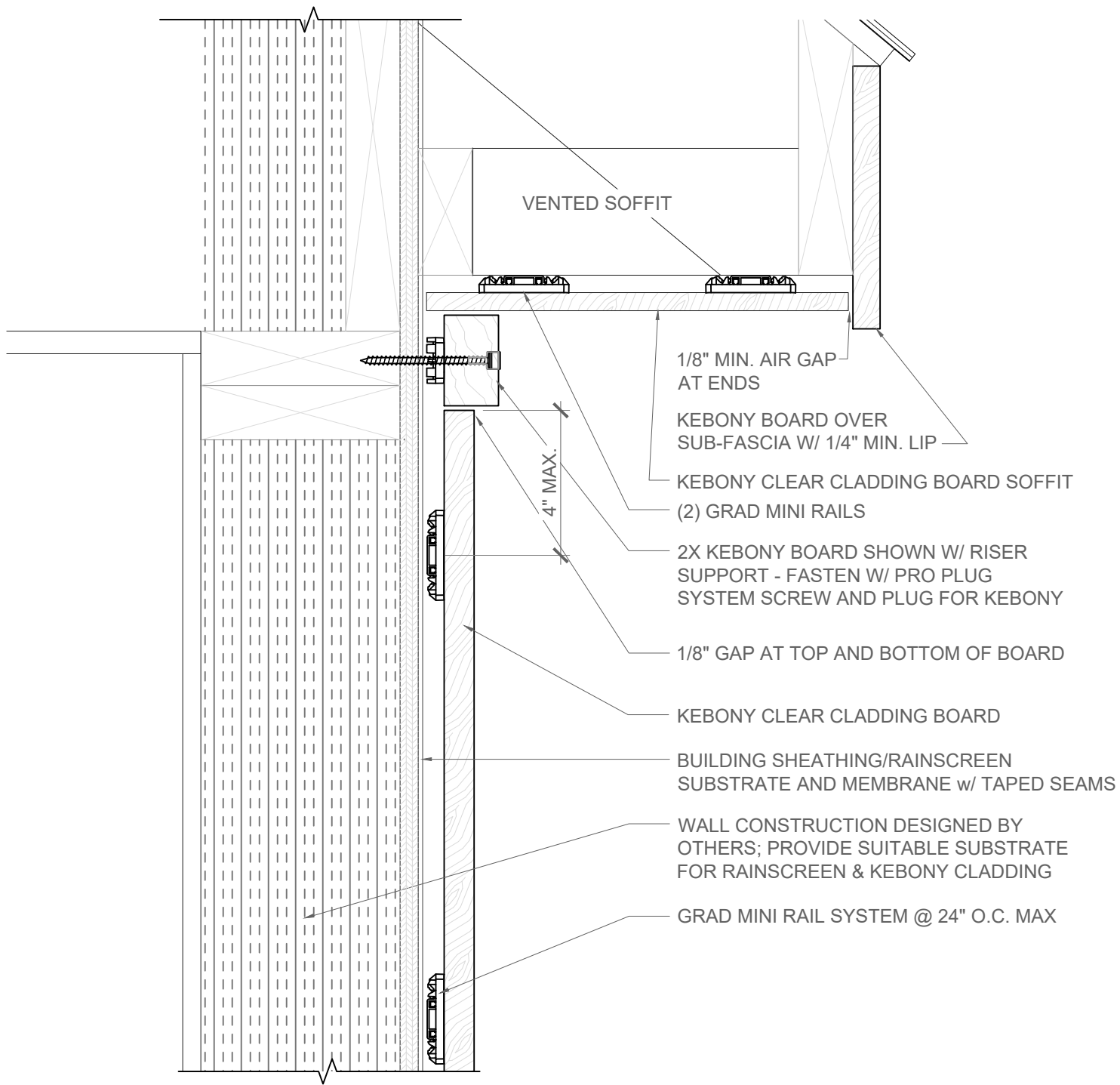
\*FLASHING MUST BE MADE FROM MATERIALS COMPATIBLE WITH KEBONY. PLEASE CHECK THE PRODUCT EXPECTATIONS DOCUMENT FOR GUIDELINES

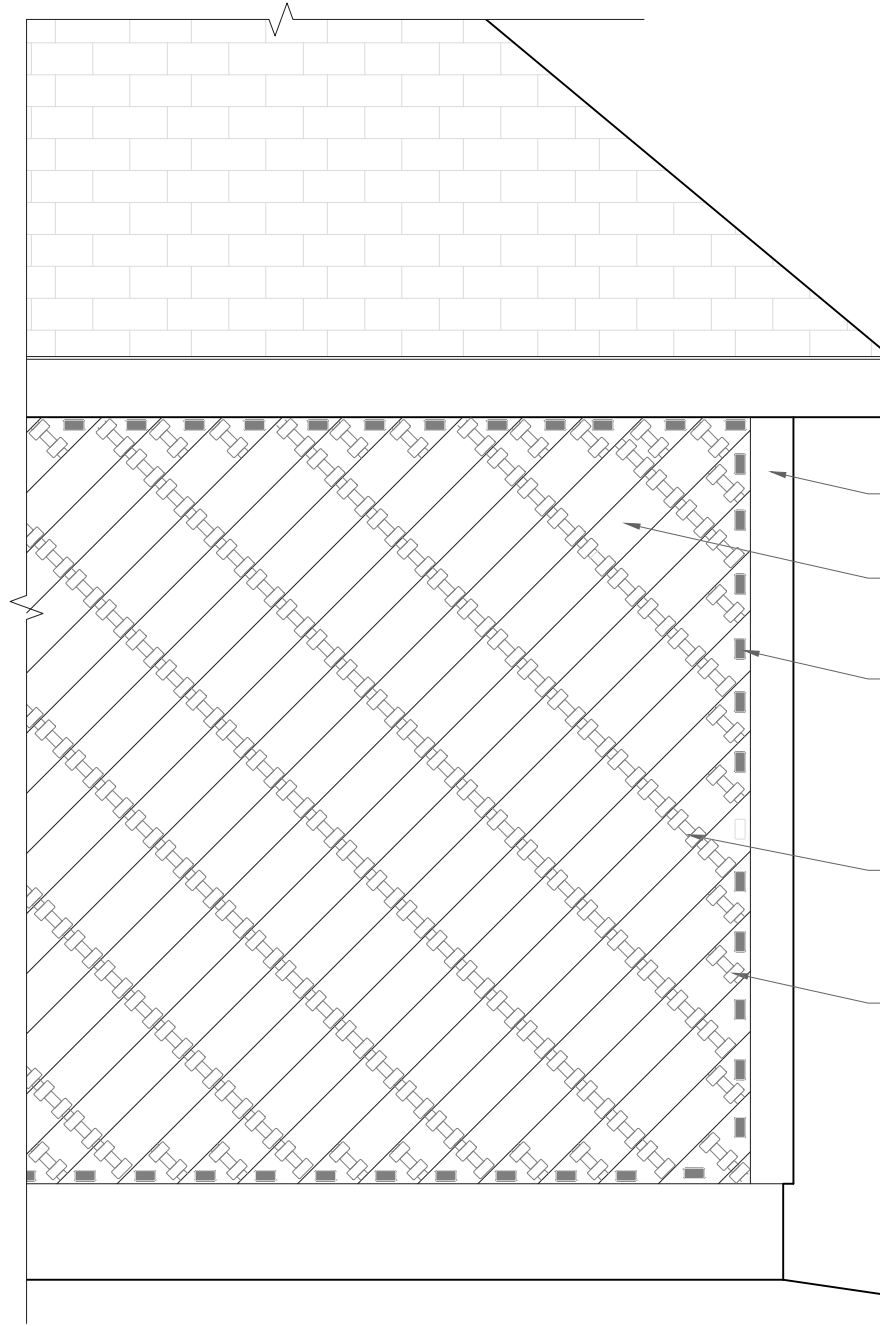
\*\*TO PREVENT POSSIBLE SLIDING OF THE VERTICAL BOARDS, USE (1) A RISER SUPPORT WITH PRO PLUG AND/OR (2) AN ADHESIVE APPLIED DIRECTLY ONTO THE CLIPS. SEE INSTALLATION GUIDE FOR DETAILS











21 mm KEBONY CLEAR CLADDING BOARD AT CORNER, OPTIONAL

KEBONY CLEAR CLADDING BOARD AT 45 DEG

GRAD MINI RISER SUPPORT AT END OF KEBONY CLEAR CLADDING BOARD AS REQ'D - FASTEN W/ PRO PLUG SYSTEM SCREW AND PLUG FOR KEBONY  
(GRAD MINI RISER SHOWN AS GRAY)

GRAD MINI RAIL SYSTEM @ 16" O.C. MAX INSTALL AT 45 DEG, PERPENDICULAR TO KEBONY CLEAR CLADDING BOARDS

GRAD MINI RAIL SYSTEM INFILL RAILS AS REQ'D AT ENDS

NOTE - THERE NEEDS TO BE A FASTENER/CLIP NO FURTHER THAN 4" FROM THE EDGE. USE RAILS TO INFILL WHEN CONDITION ARISES.